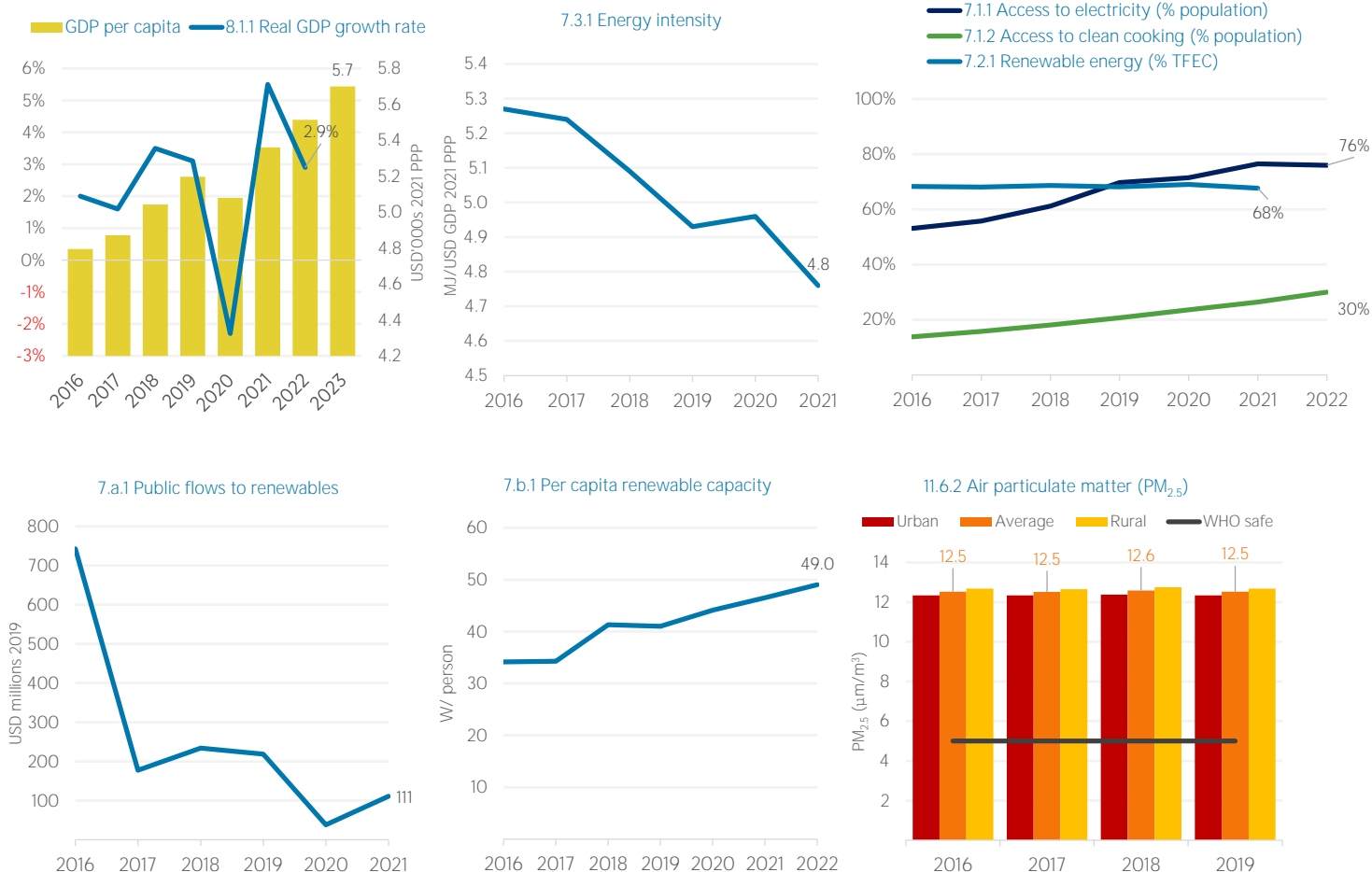


COUNTRY INDICATORS AND SDGS



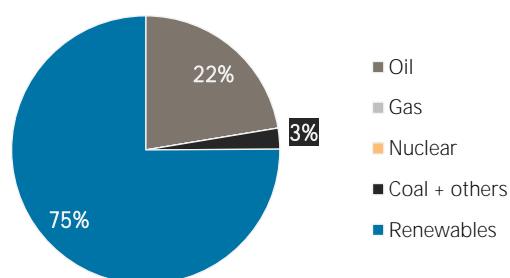
TOTAL ENERGY SUPPLY (TES)

Total Energy Supply (TES)	2016	2021
Non-renewable (TJ)	205 481	244 835
Renewable (TJ)	747 662	738 122
Total (TJ)	953 143	982 958
Renewable share (%)	78	75

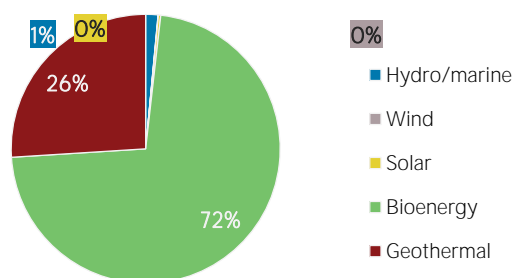
Growth in TES	2016-21	2020-21
Non-renewable (%)	+19.2	-3.7
Renewable (%)	-1.3	-4.8
Total (%)	+3.1	-4.5

Primary energy trade	2016	2021
Imports (TJ)	309 828	269 069
Exports (TJ)	73 134	110
Net trade (TJ)	- 236 694	- 268 959
Imports (% of supply)	33	27
Exports (% of production)	10	0
Energy self-sufficiency (%)	78	75

Total energy supply in 2021

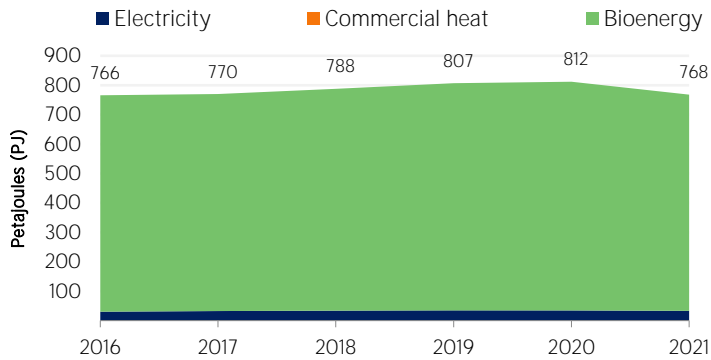


Renewable energy supply in 2021



RENEWABLE ENERGY CONSUMPTION (TFEC)

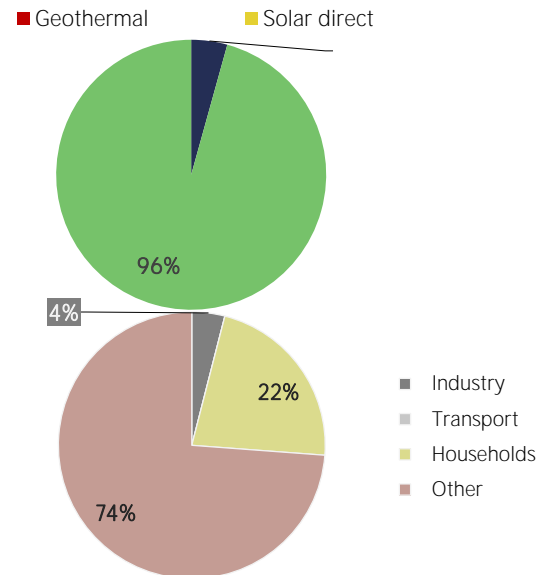
Renewable TFEC trend



Consumption by sector

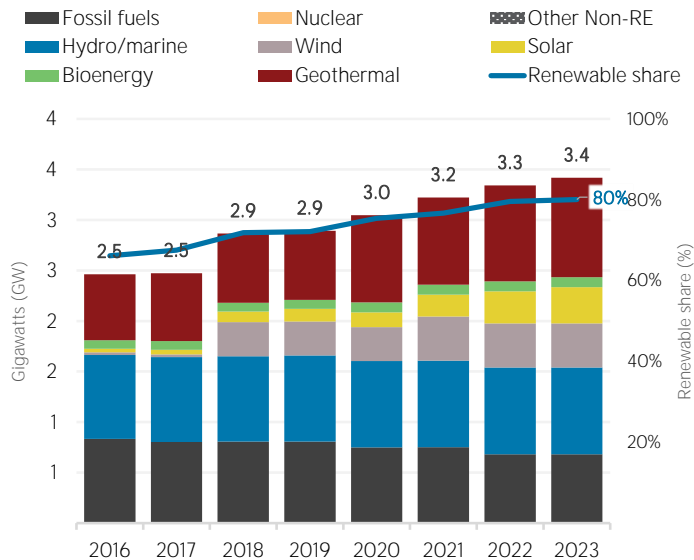
	2016	2021
Industry (TJ)	33 586	30 638
Transport (TJ)	0	0
Households (TJ)	224 933	170 402
Other (TJ)	507 645	566 721

Renewable energy consumption in 2021

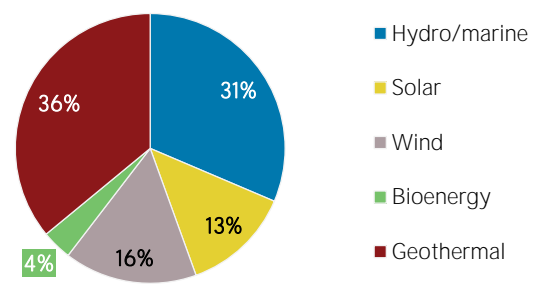


ELECTRICITY CAPACITY

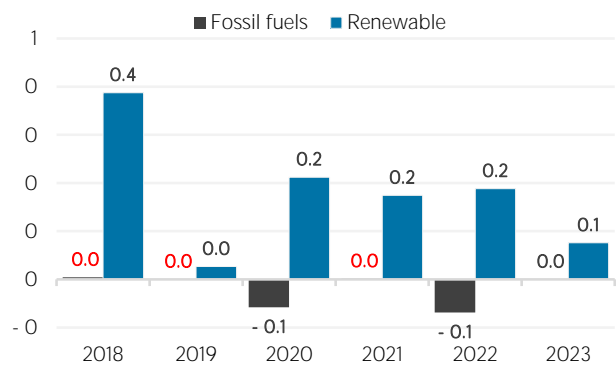
Installed capacity trend



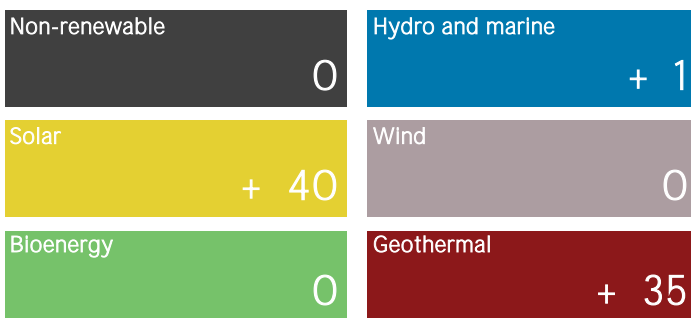
Renewable capacity in 2023



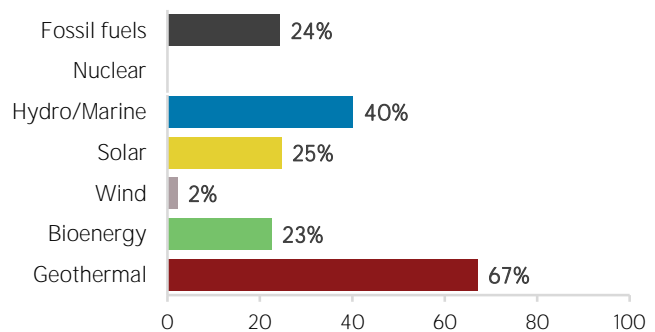
Net capacity change (GW)



Net capacity change in 2023 (MW)



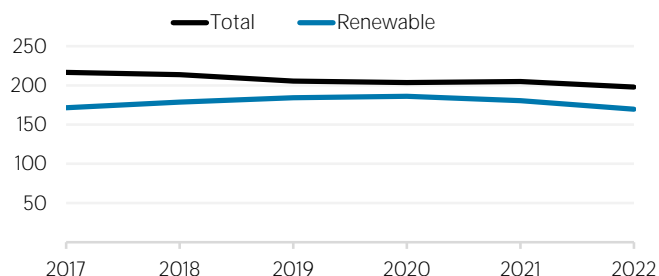
Capacity utilisation in 2022 (%)



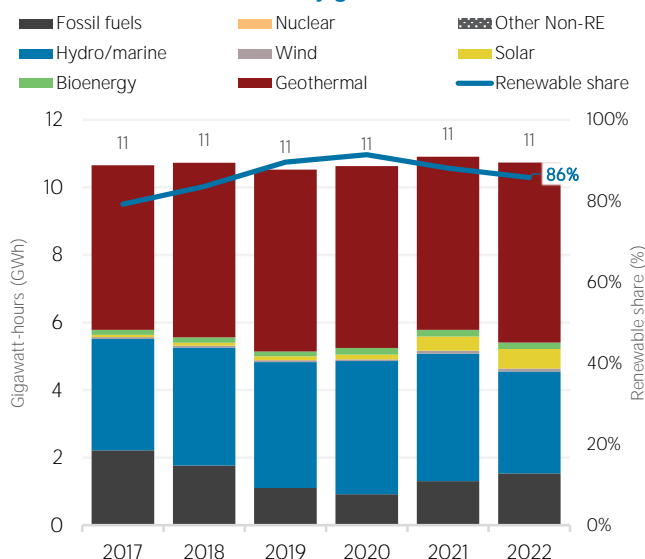
ELECTRICITY GENERATION

Generation in 2022	GWh	%
Non-renewable	1 530	14
Renewable	9 203	86
Hydro and marine	3 020	28
Solar	578	5
Wind	85	1
Bioenergy	195	2
Geothermal	5 325	50
Total	10 733	100

Per capita electricity generation (kWh)



Electricity generation trend

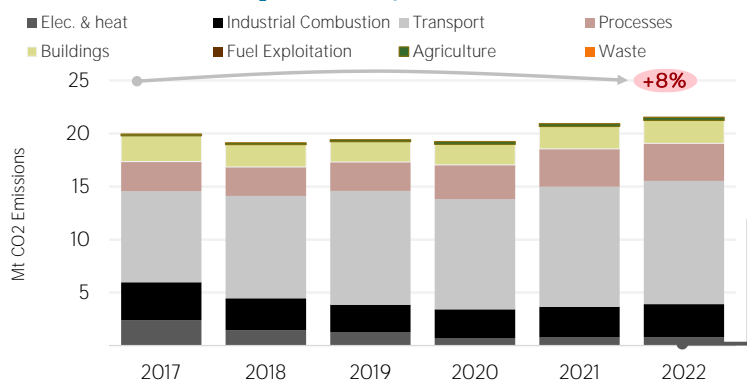


LATEST POLICIES, PROGRAMMES AND LEGISLATION

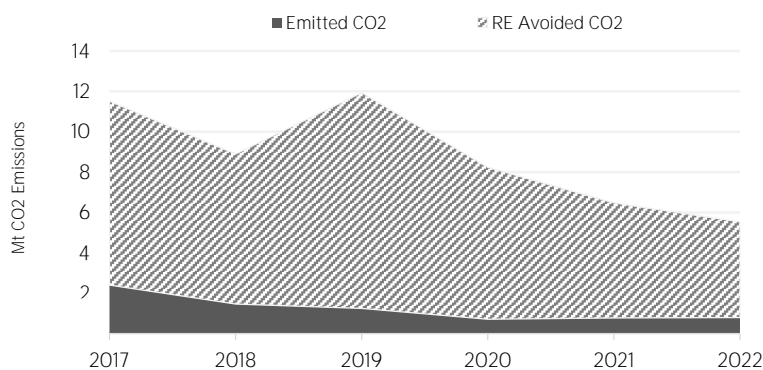
- 2022 & 2023 fuel subsidy scheme- Petroleum Development Levy Fund. **2022**
- 2022 Reduction of electricity tariffs **2022**
- Cooking gas consumer support **2022**
- Kenya Off-Grid Solar Access Project **2020**
- KS 2463 Non-ducted air conditioners - Testing and rating performance **2019**

ENERGY AND EMISSIONS

CO₂ emissions by sector

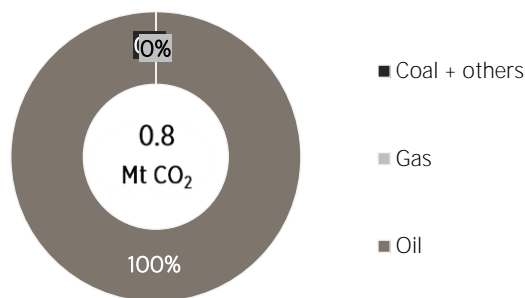


Avoided emissions from renewable elec. & heat

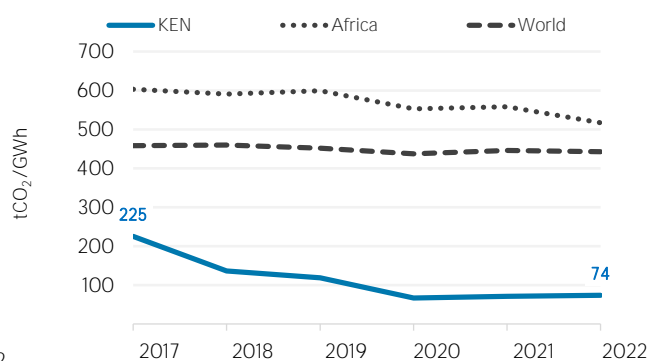


Avoided emissions based on fossil fuel mix used for power

Elec. & heat generation CO₂ emissions in

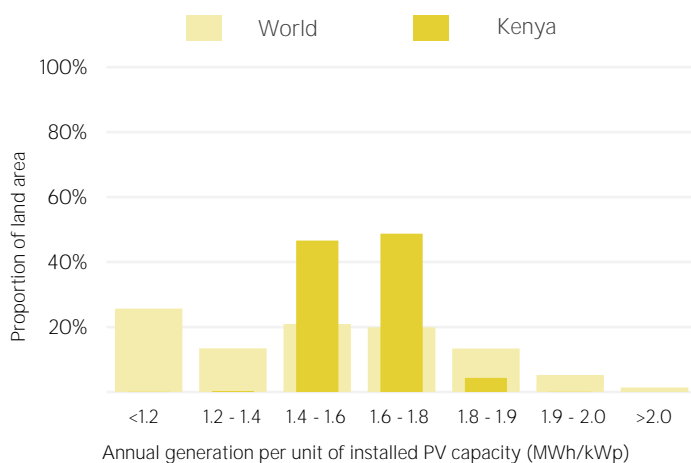


CO₂ emission factor for elec. & heat generation

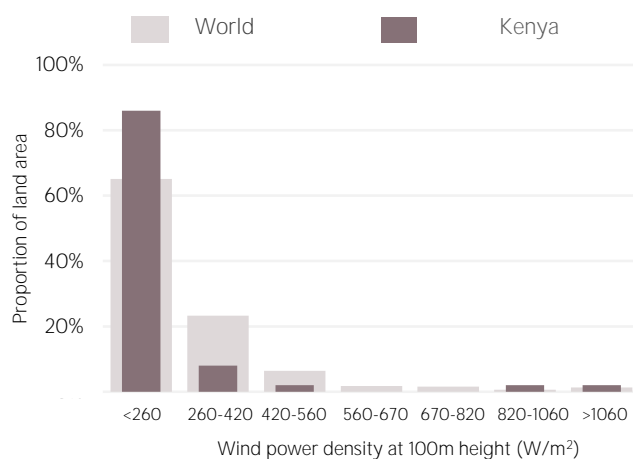


Calculated by dividing power sector emissions by elec. + heat gen.

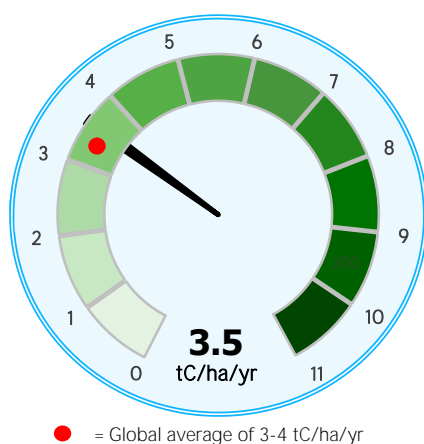
Distribution of solar potential



Distribution of wind potential



Biomass potential: net primary production



Indicators of renewable resource potential

Solar PV: Solar resource potential has been divided into seven classes, each representing a range of annual PV output per unit of capacity (kWh/kWp/yr). The bar chart shows the proportion of a country's land area in each of these classes and the global distribution of land area across the classes (for comparison).

Onshore wind: Potential wind power density (W/m^2) is shown in the seven classes used by NREL, measured at a height of 100m. The bar chart shows the distribution of the country's land area in each of these classes compared to the global distribution of wind resources. Areas in the third class or above are considered to be a good wind resource.

Biomass: Net primary production (NPP) is the amount of carbon fixed by plants and accumulated as biomass each year. It is a basic measure of biomass productivity. The chart shows the average NPP in the country (tC/ha/yr), compared to the global average NPP of 3-4 tonnes of carbon

Sources: IRENA statistics, plus data from the following sources: UN SDG Database (original sources: WHO: World Bank: IEA: IRENA: and UNSD); UN World Population Prospects; UNSD Energy Balances; UN COMTRADE; World Bank World Development Indicators; EDGAR; REN21 Global Status Report; IEA-IRENA Joint Policies and Measures Database; IRENA Global Atlas; and World Bank Global Solar Atlas and Global Wind Atlas.

Additional notes: Capacity per capita and public investments SDGs only apply to developing areas. Energy self-sufficiency has been defined as total primary energy production divided by total primary energy supply. Energy trade includes all commodities in Chapter 27 of the Harmonised System (HS). Capacity utilisation is calculated as annual generation divided by year-end capacity x 8,760h/year. Avoided emissions from renewable power is calculated as renewable generation divided by fossil fuel generation multiplied by reported emissions from the power sector. This assumes that, if renewable power did not exist, fossil fuels would be used in its place to generate the same amount of power and using the same mix of fossil fuels. In countries and years where no fossil fuel generation occurs, an average fossil fuel emission factor has been used to calculate the avoided emissions.

These profiles have been produced to provide an overview of developments in renewable energy in different countries and areas. The IRENA statistics team would welcome comments and feedback on its structure and content, which can be sent to statistics@irena.org.

Last updated on: 31 July, 2024