



SIMEC ATLANTIS  
ENERGY

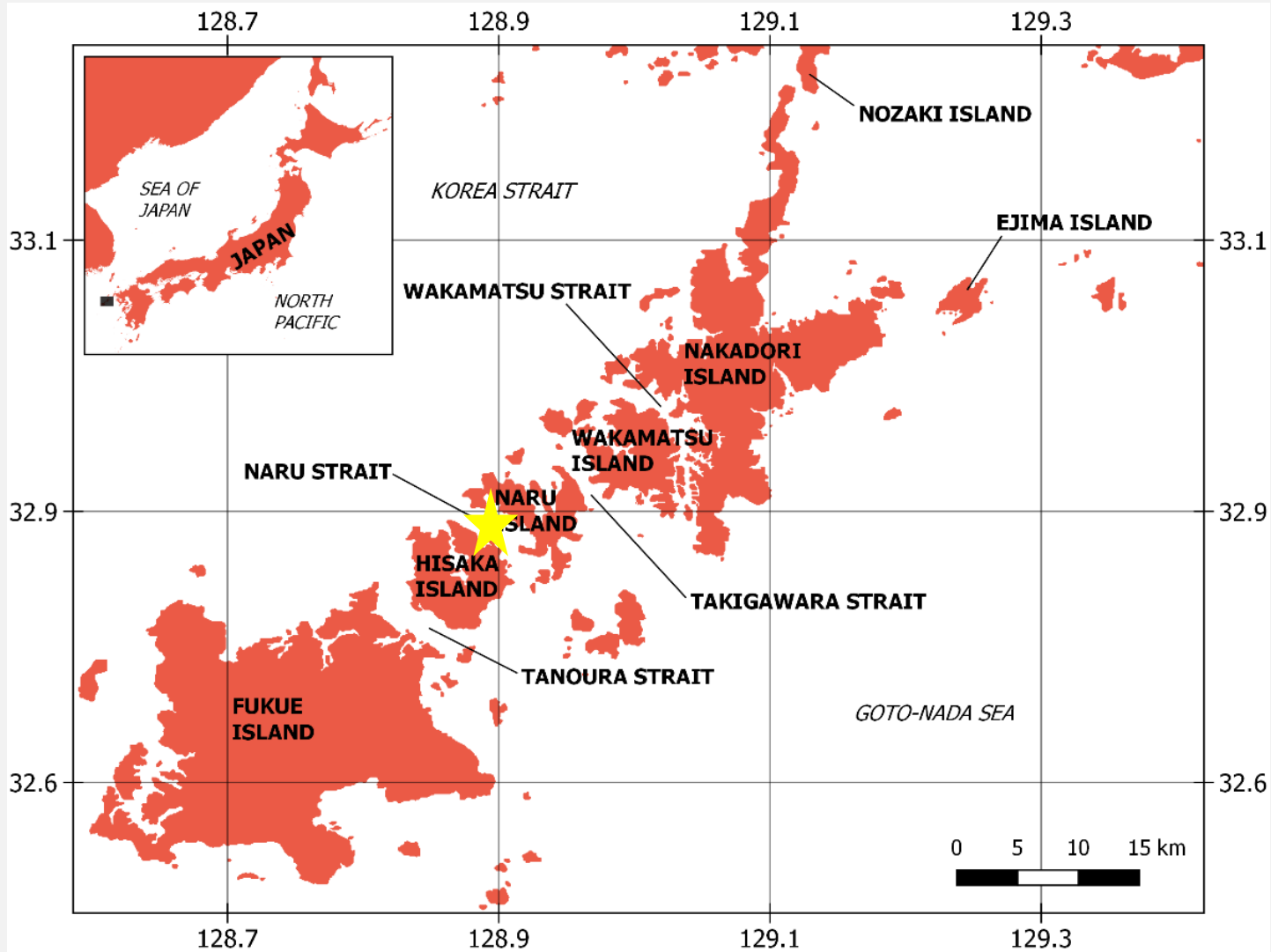
# Tidal Pilot Project

## Goto Islands, Japan

June 2020

# GOTO TIDAL PILOT PROJECT

Site

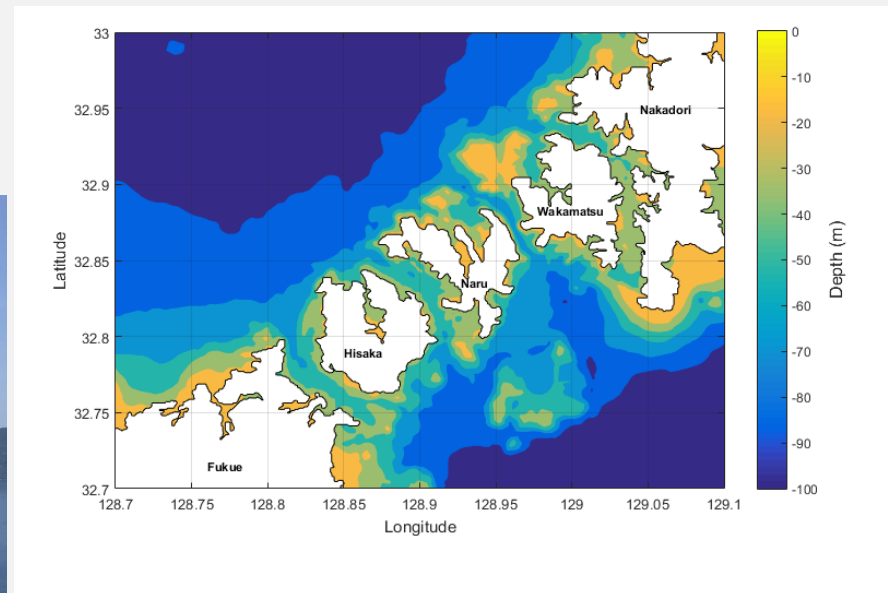


# GOTO TIDAL PILOT PROJECT

## Project Highlights

### Demonstration of Commercial Scale Turbine in Japan

- The project is located in the **Naru Strait** (Goto Islands), Japan
- A consortium being led by Kyuden Mirai Energy (KME) and partners including Nippon Steel
- SAE to provide turbine along with associated infrastructure and technical delivery support
- The project is 100% funded by the Ministry of Environment (MoE)
- Lease and Services Agreement
- SAE retains ownership of the assets



# GOTO TIDAL PILOT PROJECT



SIMEC ATLANTIS  
ENERGY

## OBJECTIVE:

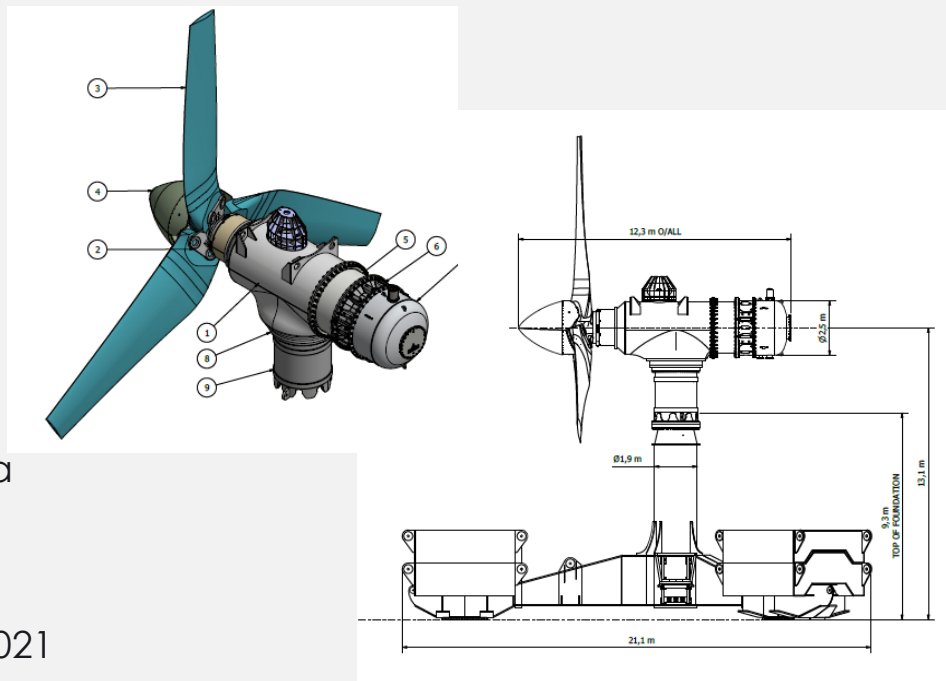
To provide a low risk and 'rapid' entry point for our technology into Japan by utilising proven technology/services and existing assets for long lead components to prove installation systems, validate site data and some initial generation. Upgradable to full AR-Series system.

## How?

- AR-Series nacelle and PMG drive-train
- Limited to 500kW FP for this phase
- No pitch or yaw mechanism
- Foundation/stab are as per successfully installed in 2010 at EMEC
- Gearbox and blades in stock at Nigg

## Client expectations

- Proof of installation and validate site data
- Renew trust in western technology
- Generation to load-bank only
- Success hopefully leads to a Phase 2 in 2021
- Inform FiT for first Japanese arrays in 2025





# GOTO TIDAL PILOT PROJECT

Re-Utilising Proven Assets



# GOTO TIDAL PILOT PROJECT

Re-Utilising Proven Assets

