

Future of modern bioenergy in SEE



Adam Brown, Energy Insights Ltd

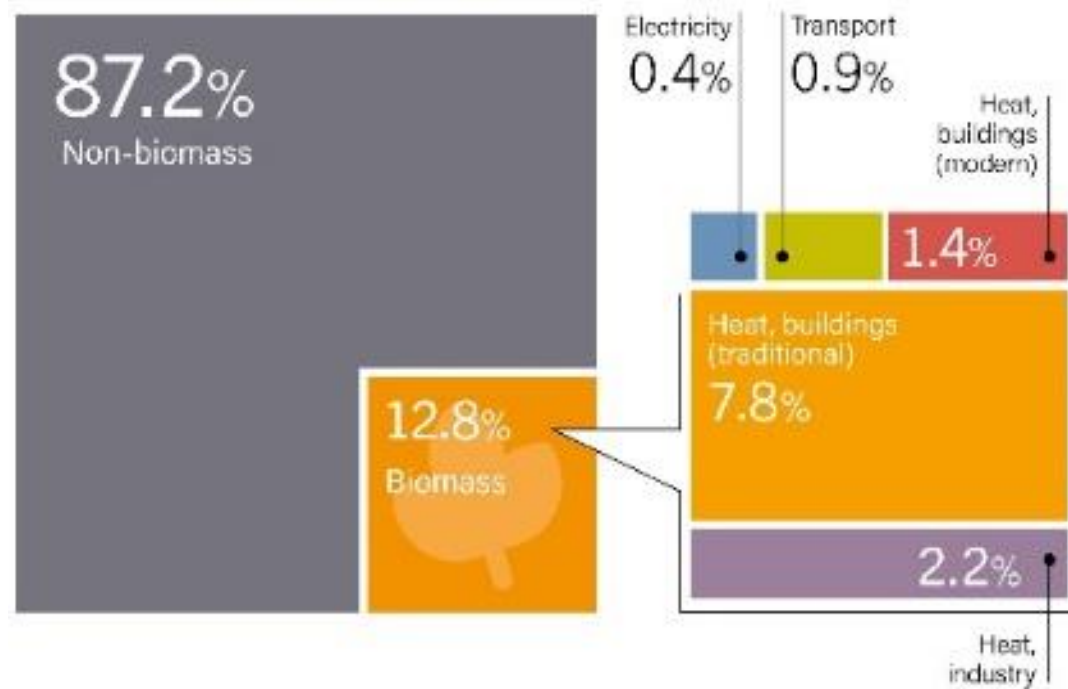
Renewable Energy Benefits: Can South East Europe realise the full potential of the Energy Transition?

Sarajevo, 12 June 2019

1. Global importance of bioenergy
 - its current role
 - in future low carbon scenarios
2. Status of bioenergy in SEE Europe.
3. Potential for bioenergy in SEE
4. Requirements for progress
5. Future priorities:
 - Improving residential use of bioenergy
 - Using wastes for energy including the potential for biogas/biomethane
 - Producing and using biofuels
6. Conclusions

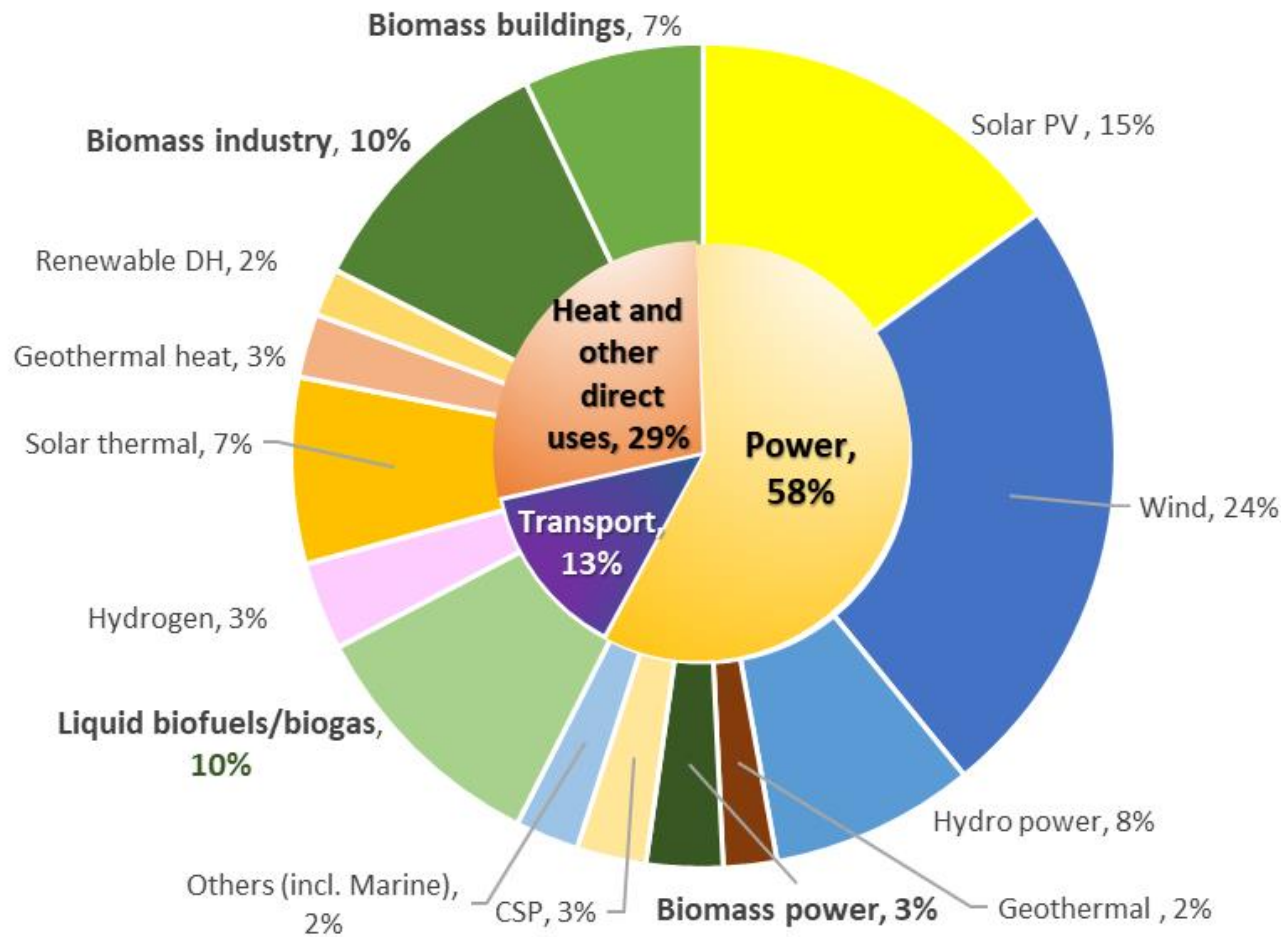
Global role of bioenergy

Shares of Bioenergy in Total Final Energy Consumption, Overall and by End-Use Sector, 2016



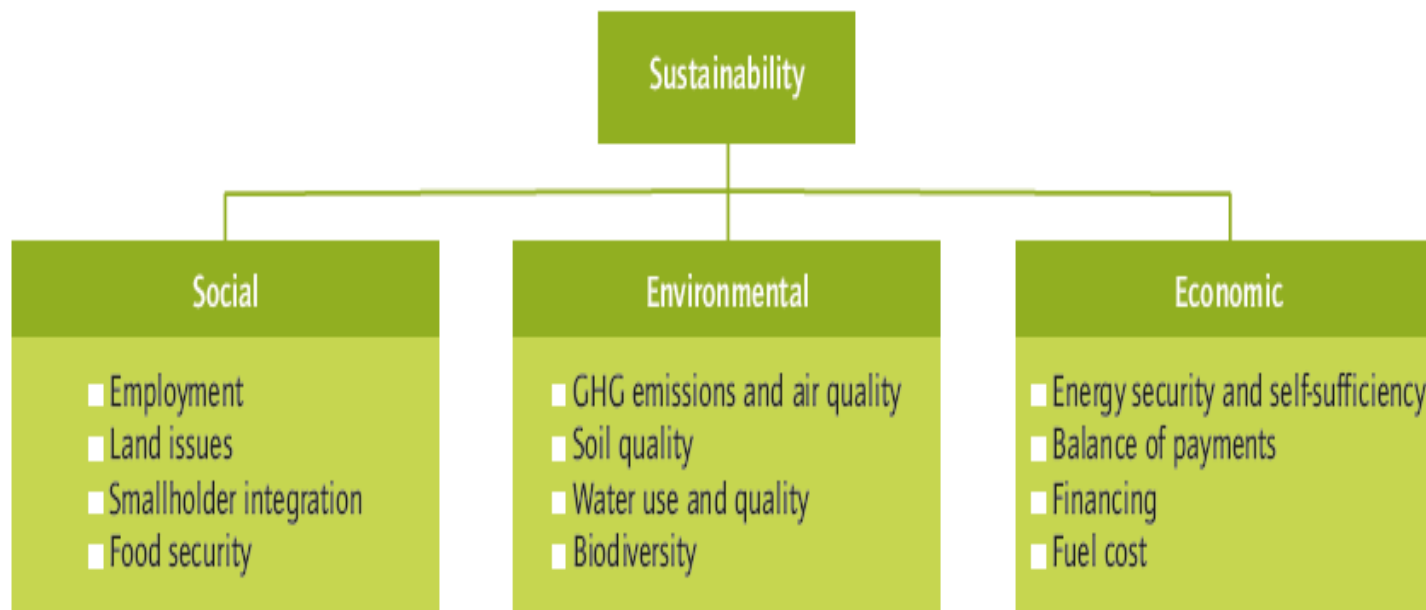
Future global role of bioenergy

REmap 2050: 222 EJ



Benefits

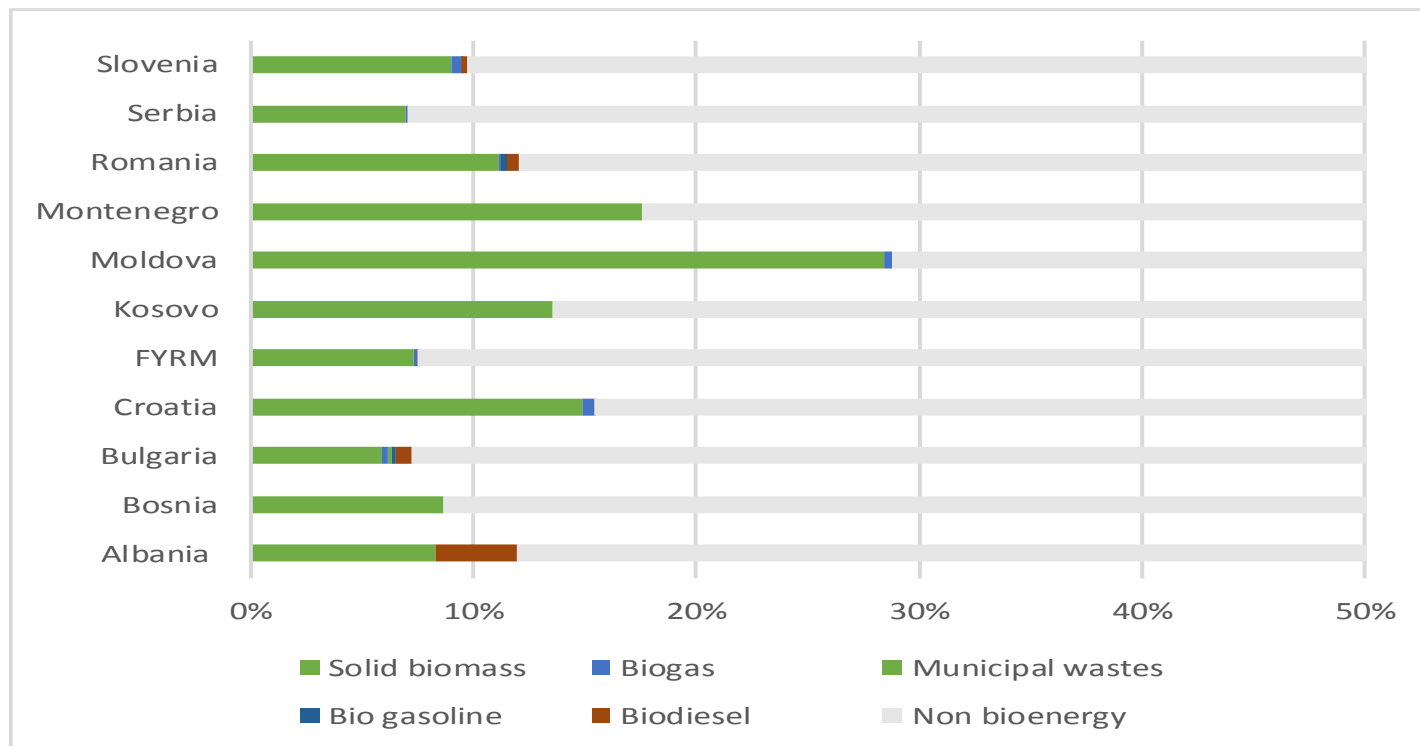
- GHG savings
- Other environmental benefits
- Energy diversity and security
- Complements good waste management practice
- Stimulates good forestry practice
- Economic development in rural areas



Strong sustainability governance is critical

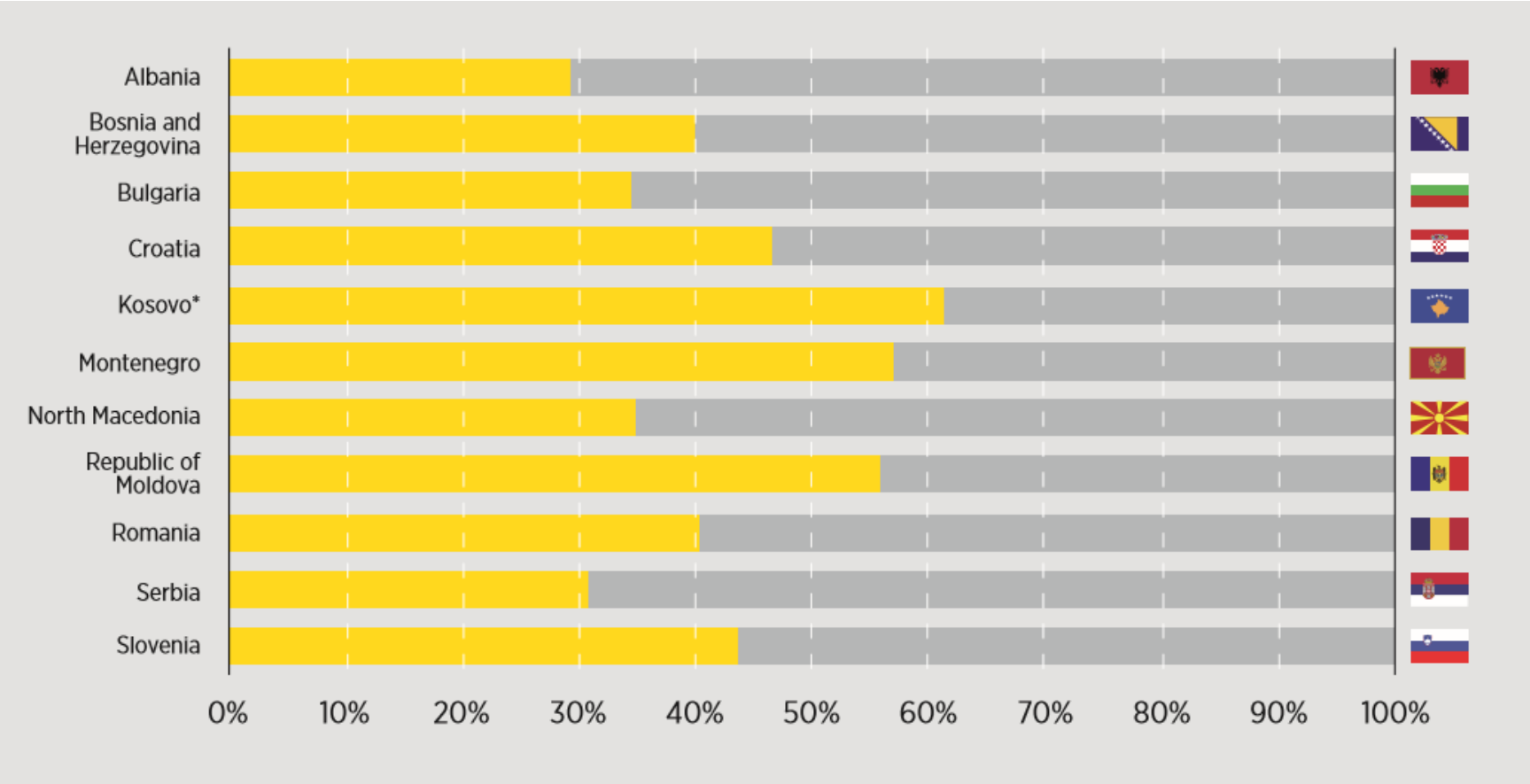
Bioenergy in SEE now

7 to 25% of energy supply

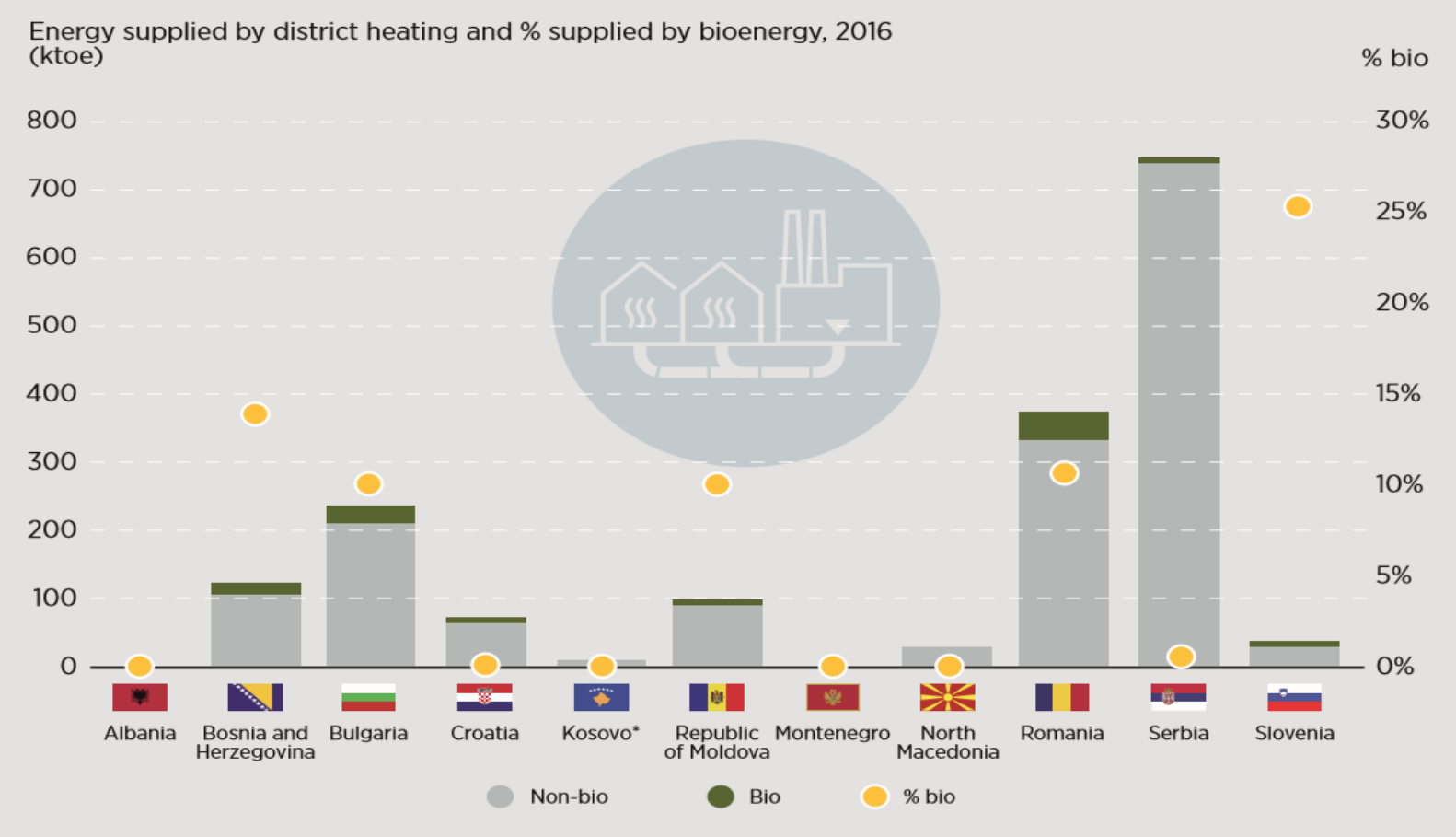


- 90% of all biomass is used for residential heating

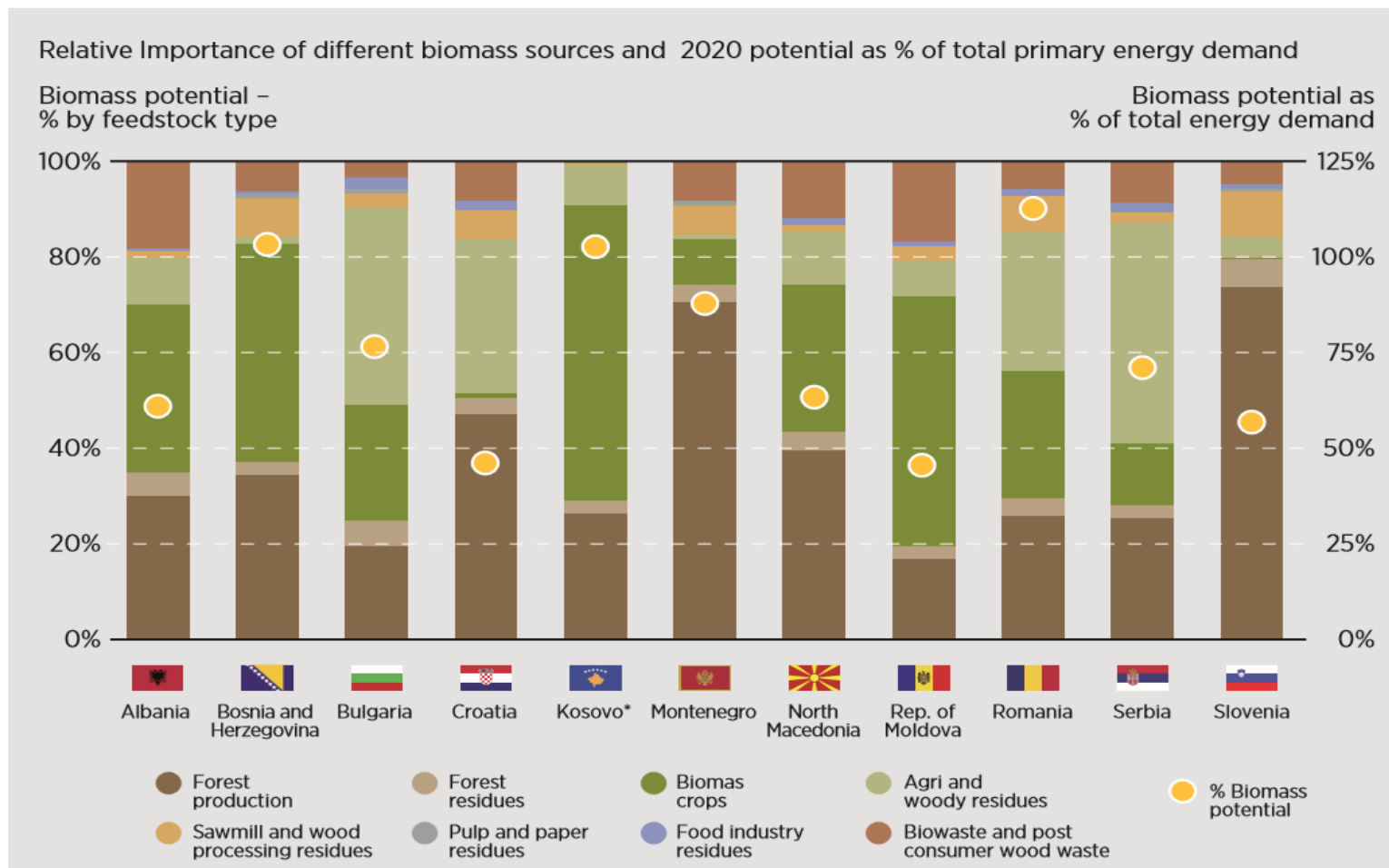
Bioenergy for residential heating



Bioenergy in district heating in SEE



Theoretical potential high.....



General

- **A long-term stable policy and regulatory framework**
 - specific targets
 - appropriate stable revenues
- **“Level playing field”**
 - removing fossil fuel subsidies and carbon pricing
- **Appropriate and clear regulations**

Bioenergy specific

- **Stringent sustainability governance regime**
- **To recognise and reward bioenergy benefits**
- **Appropriate regulations relating to the integration of bioenergy**

- Improving biomass use on residential sector
- Using wastes and biogas
- Producing and using biofuels

Conclusions

- Bioenergy key component of global low carbon energy economy.
- Role in SSE concentrated on residential sector
- Huge potential for wider role
- Needs comprehensive policy and regulatory approach including careful sustainability management
- Report suggests immediate priorities:
 - Improving residential biomass use
 - Using wastes and residues especially via biogas.
 - Potential for biofuels.



www.irena.org



www.twitter.com/irena



www.facebook.com/irena.org



www.instagram.com/irenaimages



www.flickr.com/photos/irenaimages



www.youtube.com/user/irenaorg