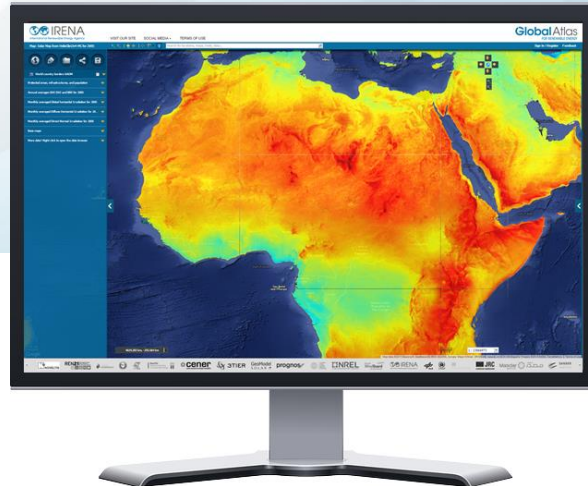
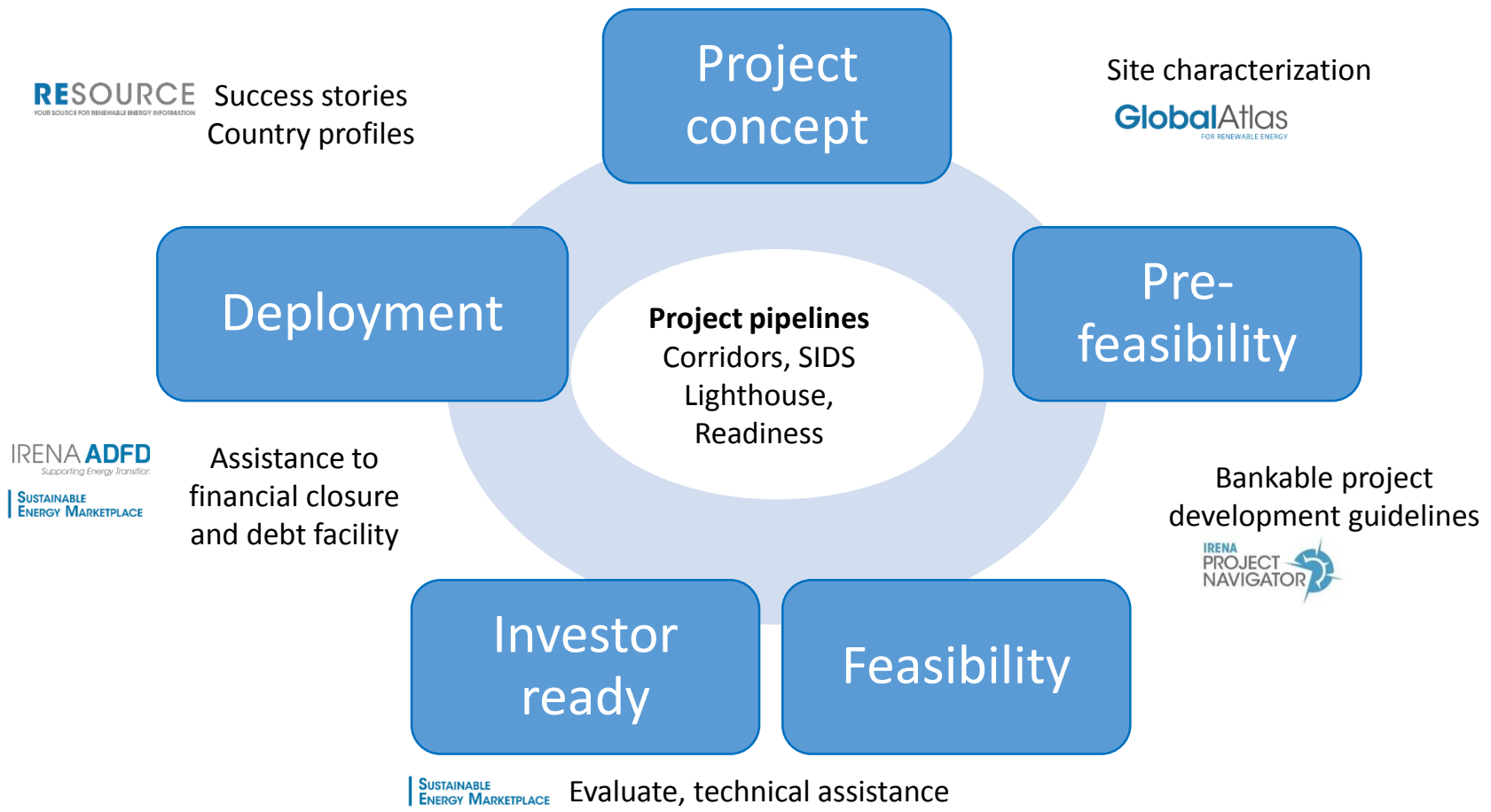
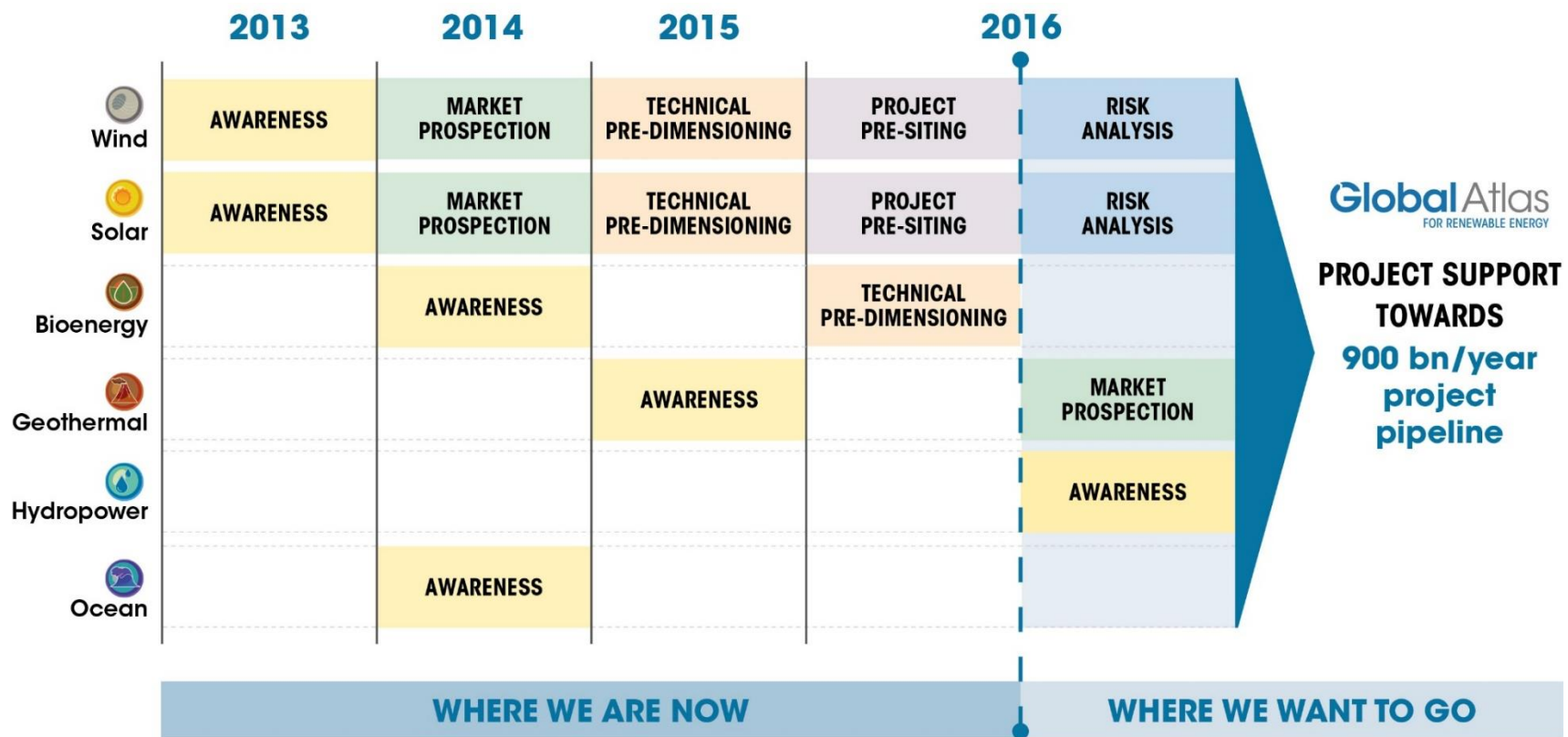


IRENA's support to build project pipelines



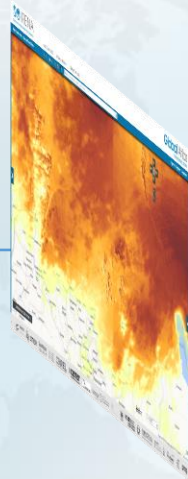
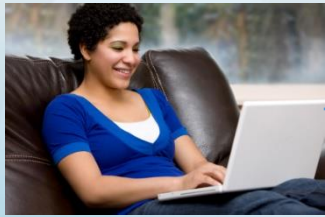


Global Atlas Strategy



Global Atlas partnership

What you see



What is happening



Who's making it happen



Partner Countries



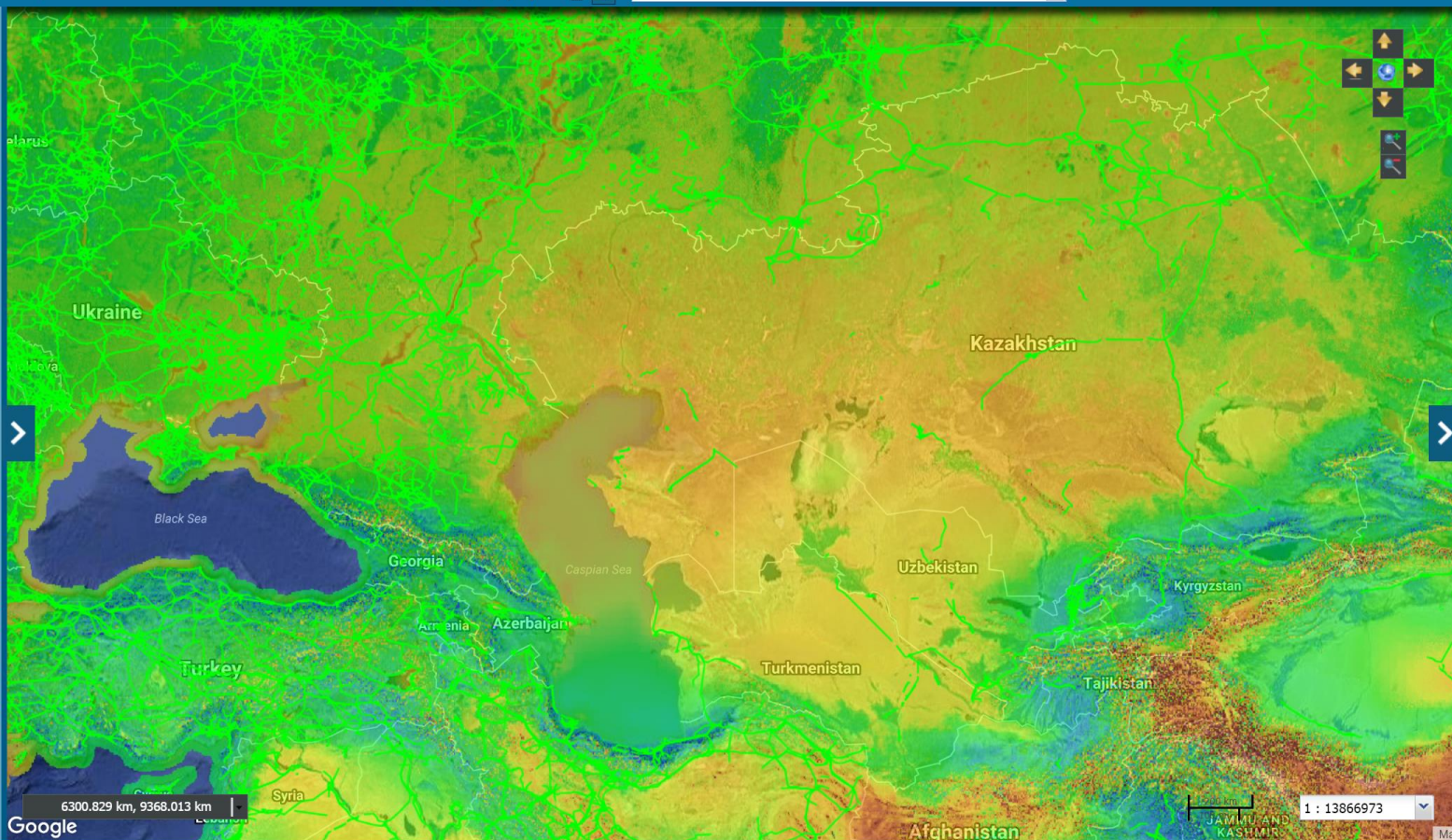
Over 2000 datasets available!

Free resource maps

Map: DTU Global Wind Atlas 1km resolution

Search for locations, maps, tools, data...

[Sign In / Register](#) [Feedback](#)

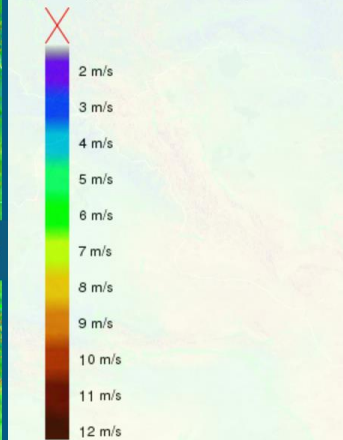


Tools & Services

[Legend](#) [Tools](#) [My processes](#)

Global power lines OpenStreetMap 2015 extract

Average WS 1km at 100m height DTU 2015



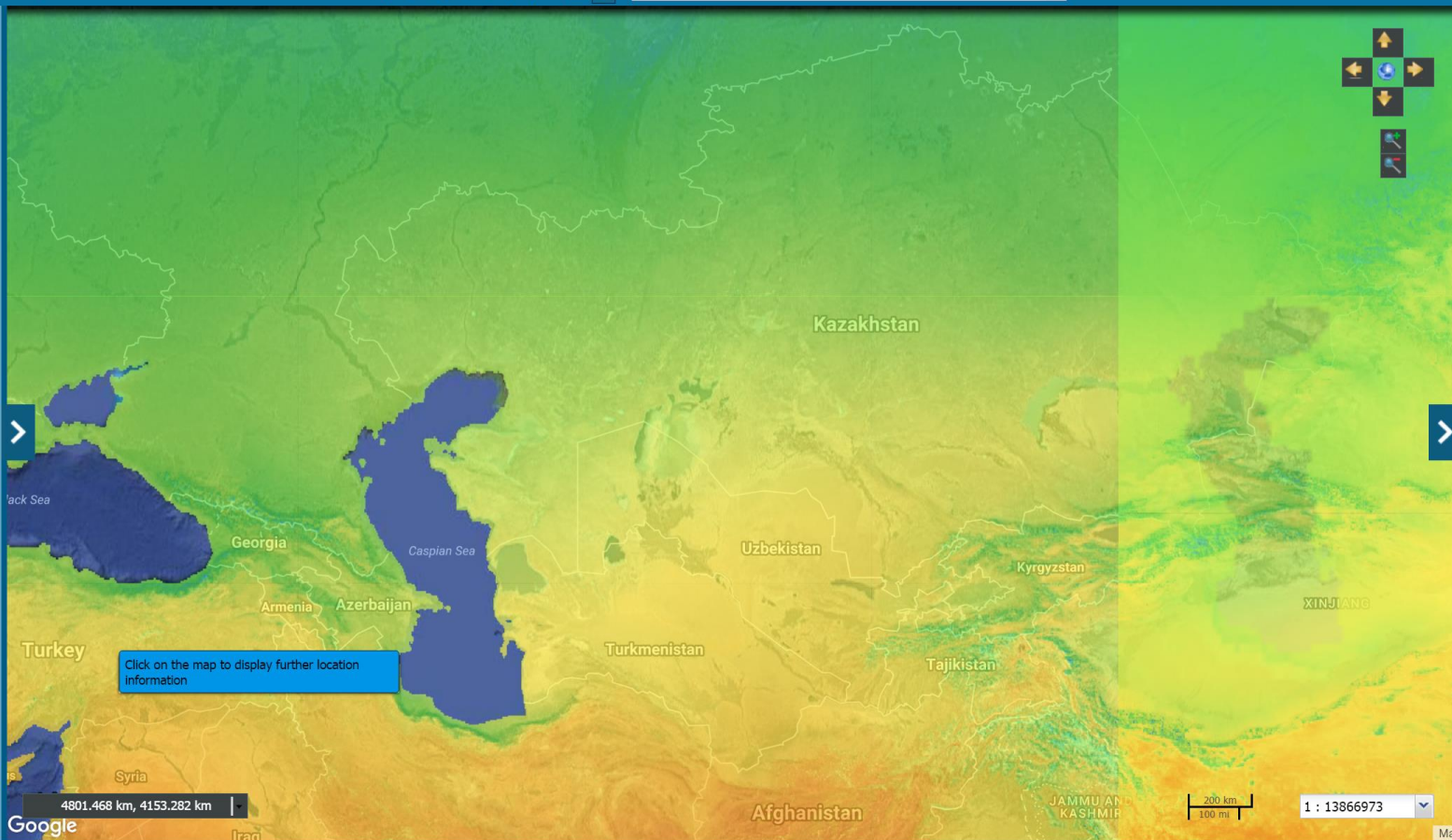
 Google Hybrid Map

Free resource maps

Map: Global Solar Atlas - ESMAP

Search for locations, maps, tools, data...

[Sign In / Register](#) [Feedback](#)



Tools & Services

[Legend](#) [Tools](#) [My processes](#)

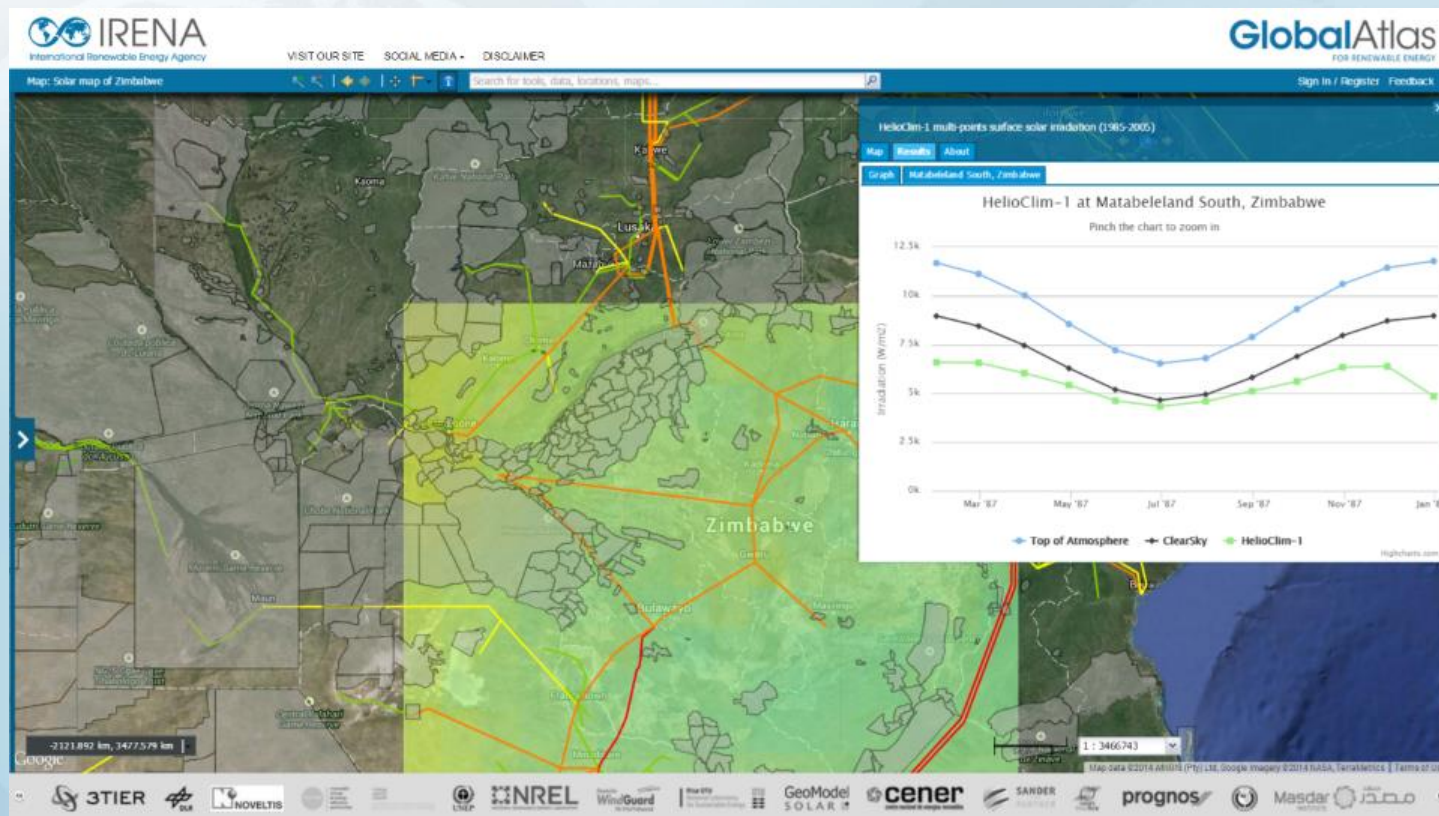
Global Horizontal Irradiation kWh/m2 World
1km 1994/1999/2007-2015 WBG

[Edit Legend](#) [Predefined Styles](#)

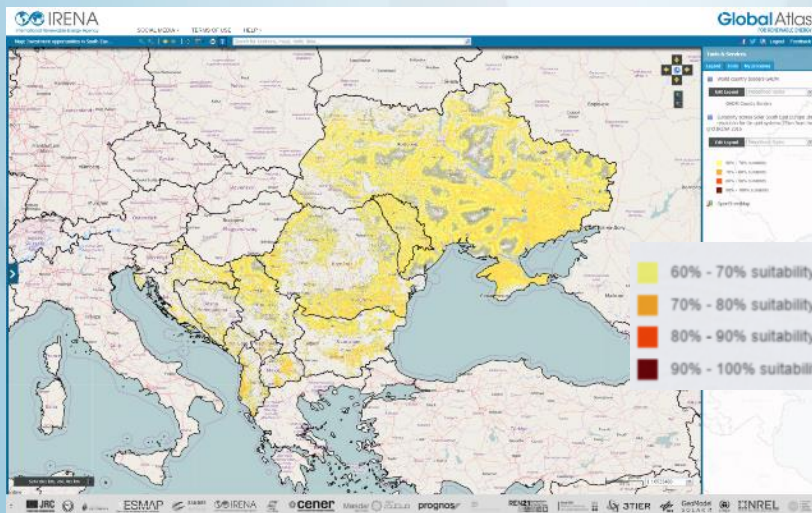
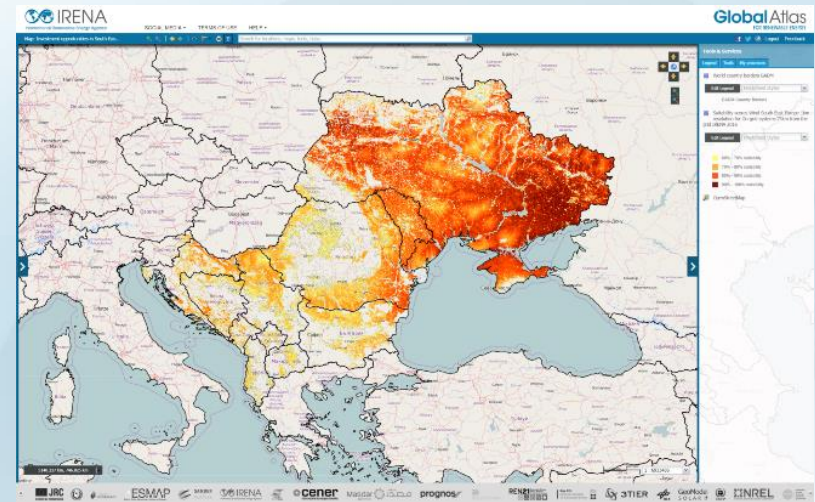
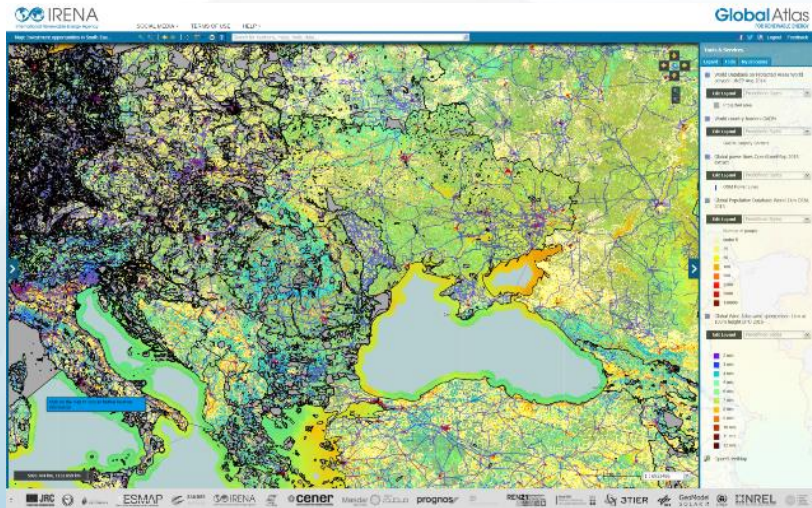
No Data

- 1.6 - 1.85 kWh/m2
- 1.85 - 2.09 kWh/m2
- 2.09 - 2.34 kWh/m2
- 2.34 - 2.58 kWh/m2
- 2.58 - 2.83 kWh/m2
- 2.83 - 3.08 kWh/m2
- 3.08 - 3.32 kWh/m2
- 3.32 - 3.57 kWh/m2
- 3.57 - 3.81 kWh/m2
- 3.81 - 4.06 kWh/m2
- 4.06 - 4.3 kWh/m2
- 4.3 - 4.55 kWh/m2
- 4.55 - 4.8 kWh/m2
- 4.8 - 5.04 kWh/m2
- 5.04 - 5.29 kWh/m2
- 5.29 - 5.53 kWh/m2
- 5.53 - 5.78 kWh/m2
- 5.78 - 6.03 kWh/m2
- 6.03 - 6.27 kWh/m2
- 6.27 - 6.52 kWh/m2
- 6.52 - 6.76 kWh/m2
- 6.76 - 7.01 kWh/m2
- 7.01 - 7.25 kWh/m2
- 7.25 - 7.5 kWh/m2

Site prospection – level 1

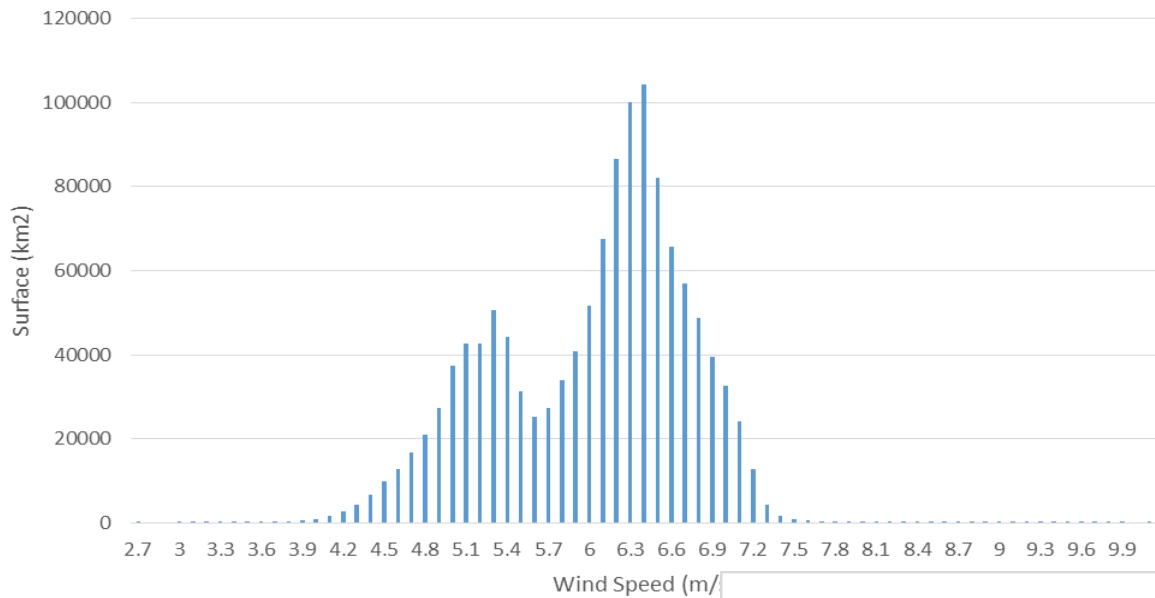


Site prospection – Level 2

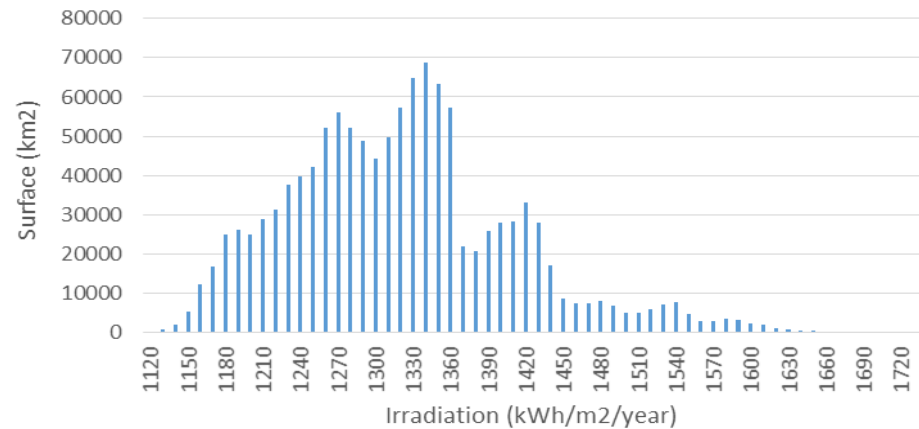


Derivative output: Technical potentials

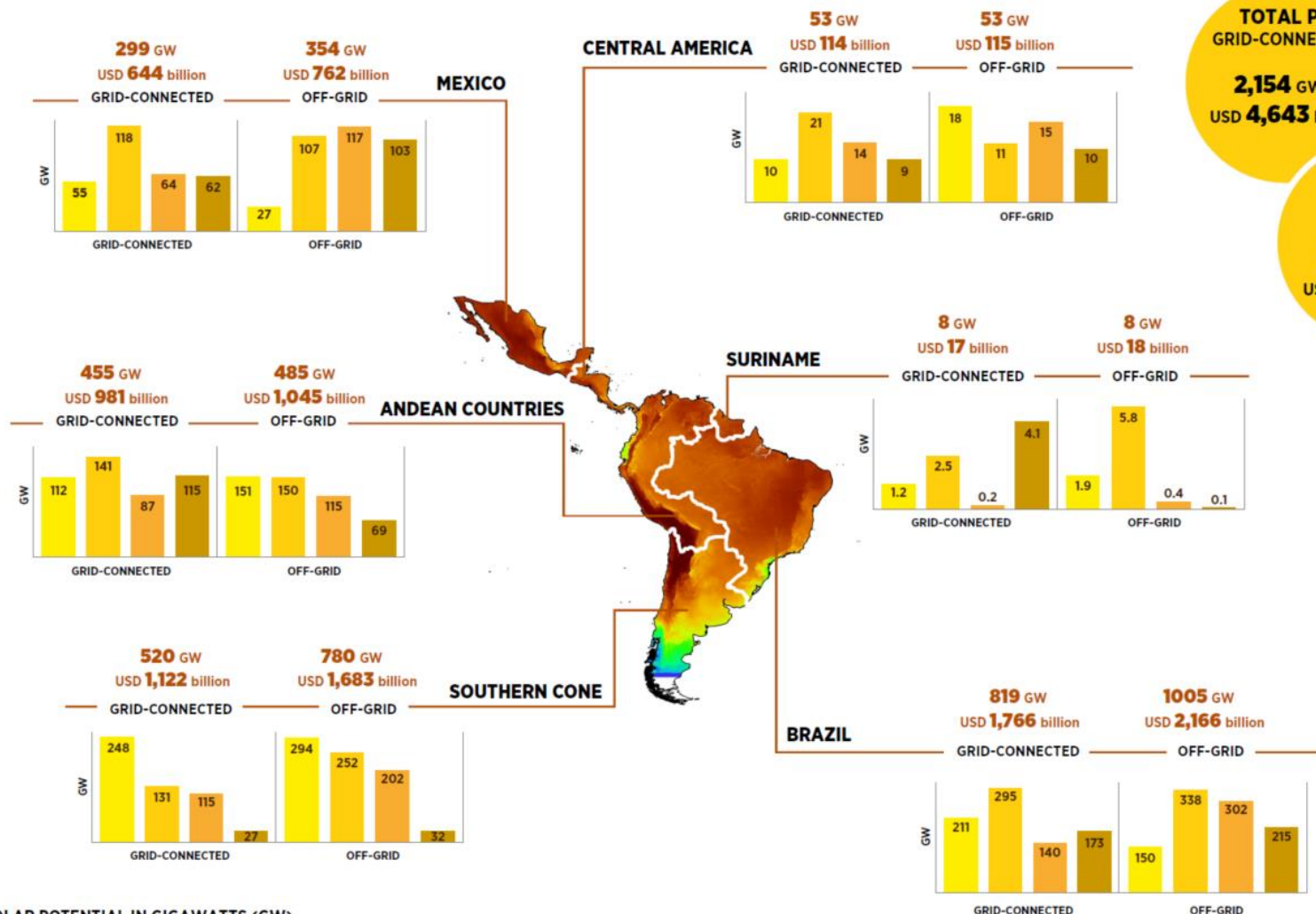
Wind On-grid - suitability above 60%



Solar On-grid - suitability above 60%



Technical potentials



TOTAL PV GRID-CONNECTED
2,154 GW
USD 4,643 billion

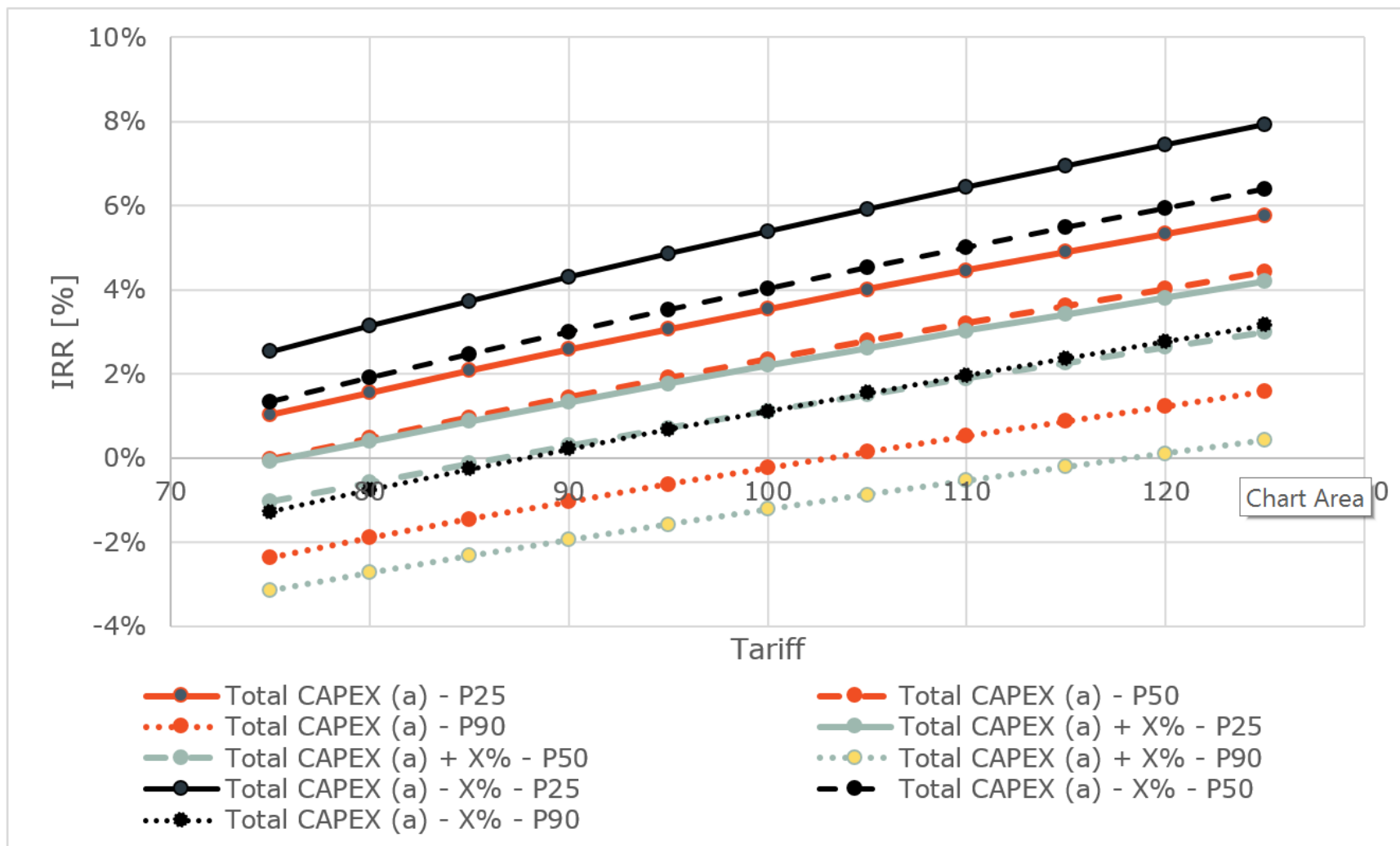
TOTAL PV OFF-GRID
2,685 GW
USD 5,789 billion

SOLAR POTENTIAL IN GIGAWATTS (GW)

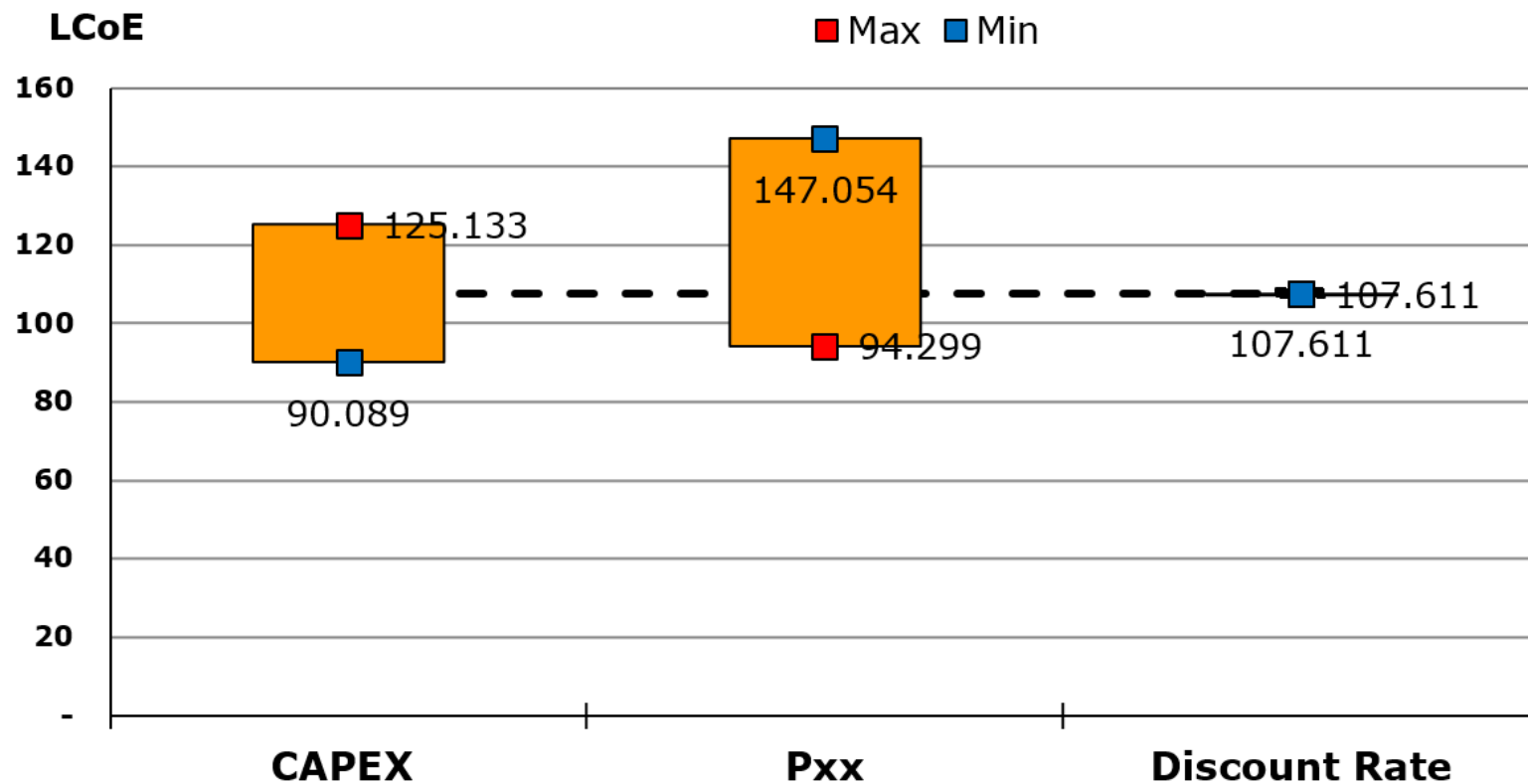
60%-70% 70%-80% 80%-90% 90%-100% TOTAL

Estimated potential for grid-connected and utility-scale off-grid solar PV across Latin America by sub-region, expressed in gigawatts (GW) and United States dollars (USD). The suitability threshold is 60%, with output indicated for a grid distance of 75 km.

Effect of Tarrif on IRR - Comparison of all scenarios



LCoE - Base scenario results represented by dashed line



Integrated service chain

