

WELCOME to The IRENA Project Navigator Workshop

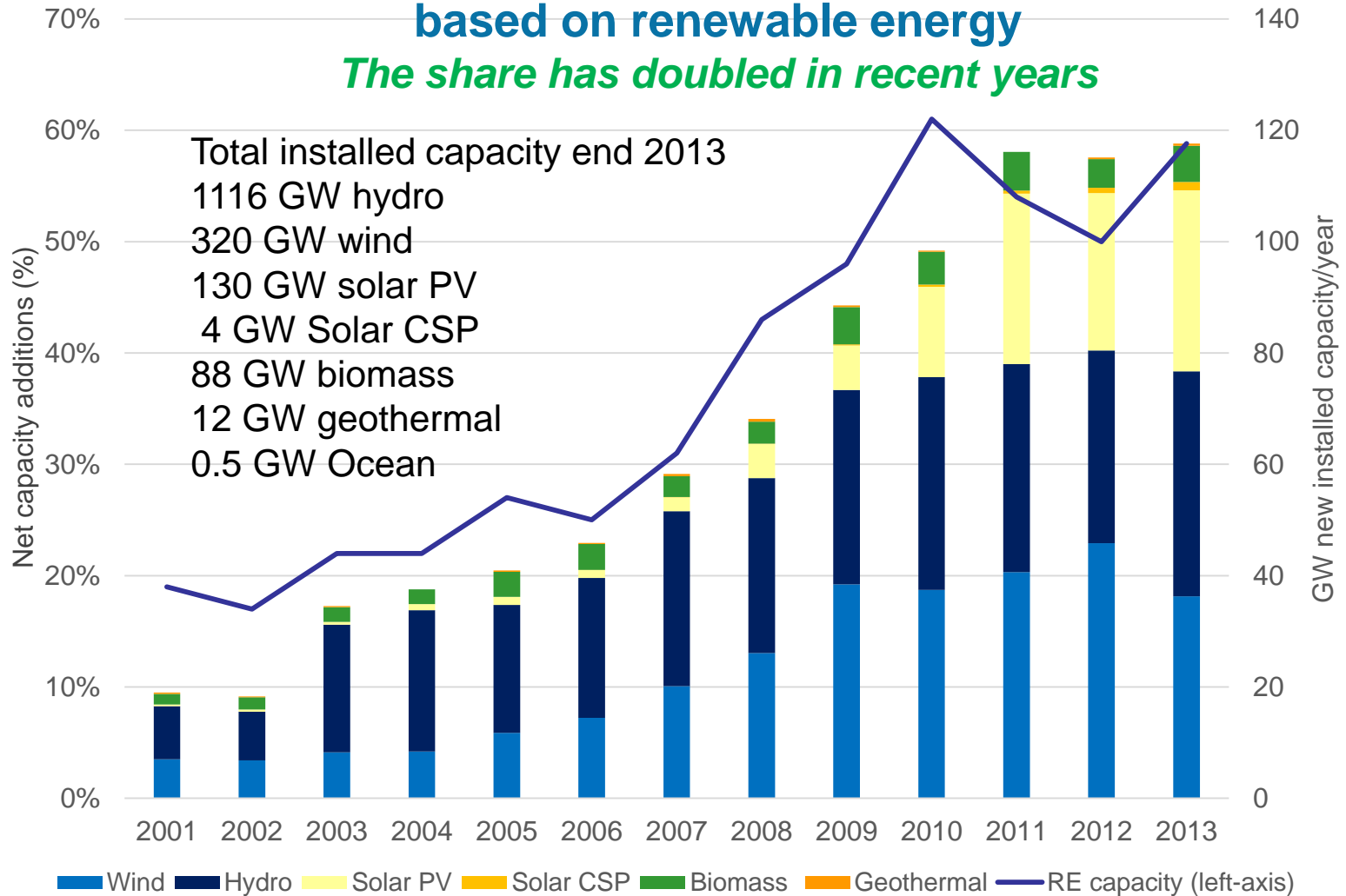
Roland Roesch
IRENA/IITC

September 10, 2014
Praia, Cape Verde



About half of the new electricity generation capacity worldwide is based on renewable energy

The share has doubled in recent years

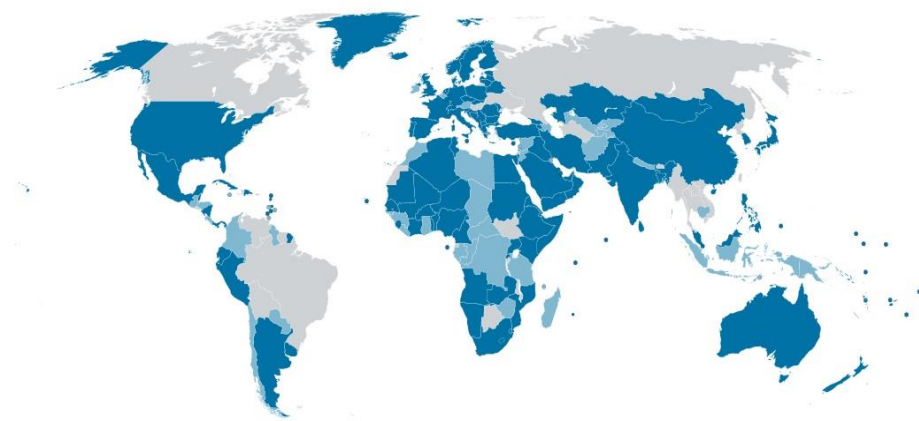


Structure and membership

Headquarters:
**Abu Dhabi,
United Arab Emirates**

Three Programmes:

- **Innovation and Technology Centre (IITC) in Bonn, Germany**
- **Knowledge, Finance and Policy Centre in Abu Dhabi**
- **Country Support Programme in Abu Dhabi**



- Members of the Agency
- Signatories/applicants for membership

169 IRENA Parties

Full Members = 133

States in accession = 36

Introduction to IRENA

Foundation: 26 January 2009 in Bonn

International Agency since April 2011

The only international RE agency worldwide

Scope: Hub, voice and source of objective information on renewable energy

Mandate: Widespread and sustainable deployment of the six forms of renewable energy resources

(Biomass, Geothermal, Hydro, Ocean, Solar, Wind)

Director-General: Adnan Z. Amin



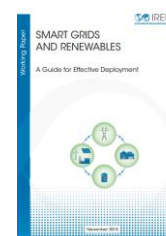
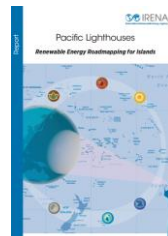
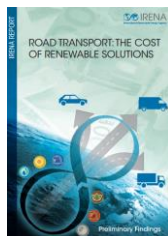
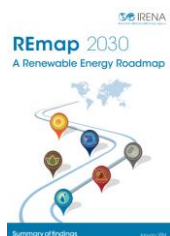
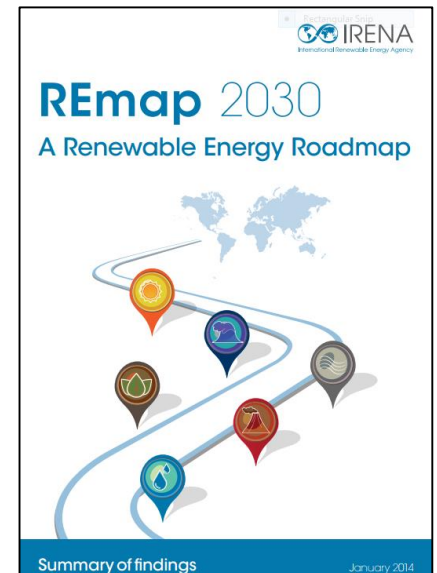
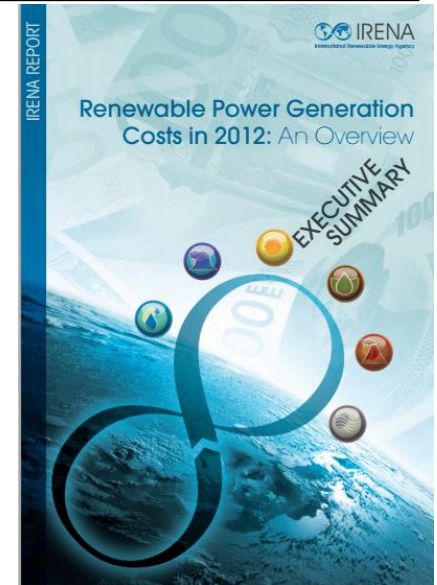
Accelerate renewable energy deployment – 6 thematic areas:

- Transition planning (incl. REmap 2030, Renewables Readiness Assessments, Technology & Innovation)
- Knowledge gateway (incl. Resource Atlas, Cost of RE)
- Enabling investment and growth (incl. Project Navigator, Standards)
- Access (incl Off-Grid, Mini-grids)
- Islands (incl. Global Renewable Energy Islands Network)
- Regional action agenda (incl. Corridors)

Abu Dhabi Fund for Development - USD 350 M for innovative project financing

IRENA Innovation and Technology Centre (IITC)

- 25 staff, opened October 2011
- Work programme **Thematic areas** :
 1. **Transition planning**: SE4ALL, REmap 2030, grids and storage roadmaps
 2. **Knowledge gateway**: Costing & innovation
 3. **Enablers**: Navigator, standards, ipr & quality control
 4. **Islands**: Grid stability, roadmaps, tariffs, tourism



- IRENA's experience so far has shown that projects often have an innovative character due to specific conditions.
 - It happens very often that neither the **project developer** nor the **involved governmental administration** has a realistic understanding of the process, the timelines and the necessary work steps to complete a bankable project proposal.
 - As a result, this may lead to higher project development costs and a higher risk of project failure.
 - Usually the potential finance opportunities and the selection and funding process of the project proposals aren't transparent.
- ➔ **IRENA/IITC has taken the initiative to make the whole project development process, including the funding alternatives, more transparent and explicit**

IRENA Project Navigator's Dimensions



Technical
Concepts



Regional
Adaptations

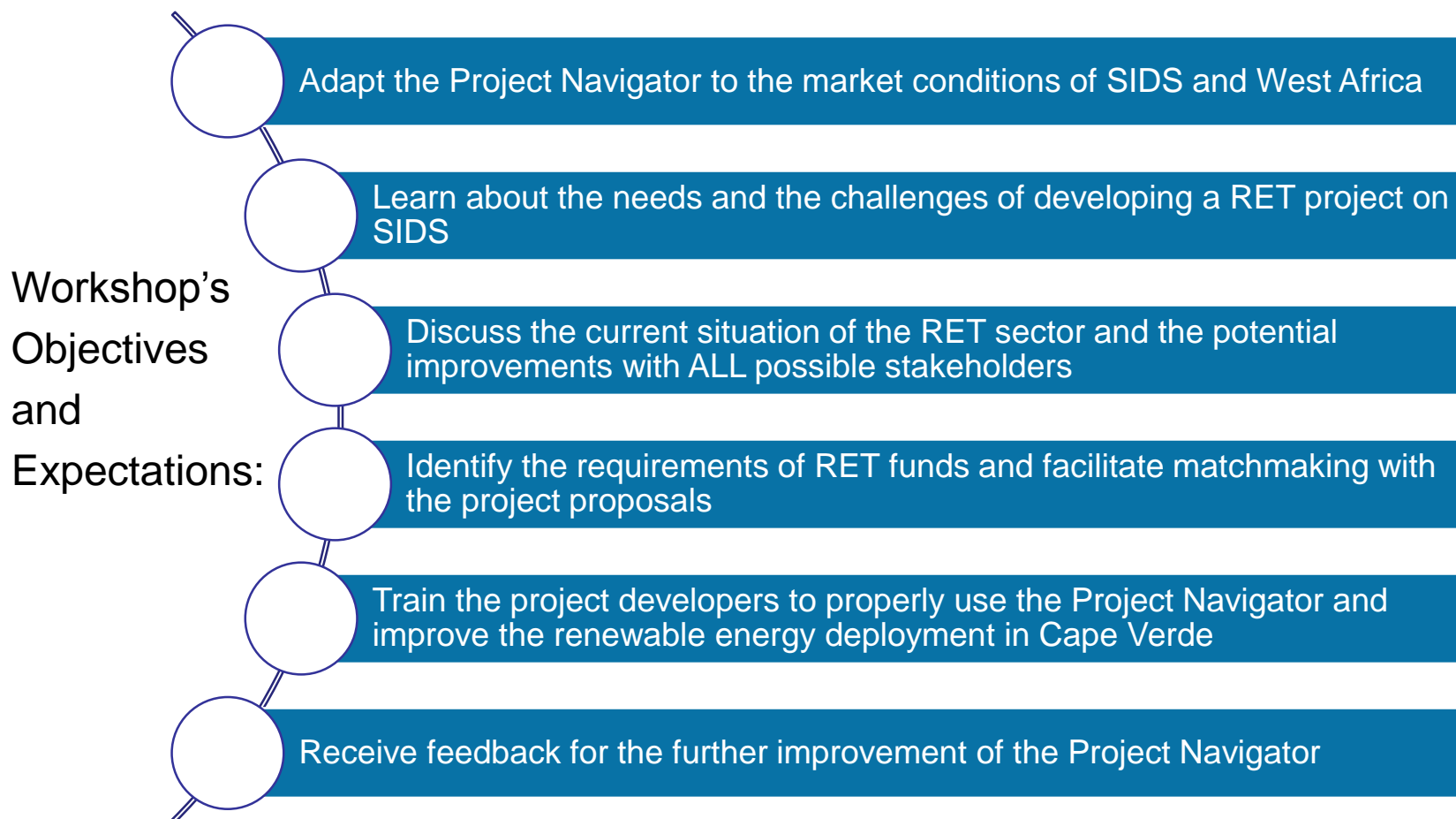


RE Funds
Database



IRENA Project Navigator Workshop in Cape Verde

...is the first Project Navigator Workshop aimed to add to the tool regional specific conditions for developing a Renewable Energy Technology (RET) project



Thank you for your attention !
Enjoy the workshop!
rroesch@irena.org