

A young girl with dark hair, wearing a blue patterned shirt, is smiling and looking upwards. She is holding a large white net with a wooden handle, which is partially filled with small insects. The background shows a green field with mountains in the distance under a clear sky.

Community Wind as Social Development Driver

Sergio Oceransky, CEO & Founder, The Yansa Group

Isthmus Region of Oaxaca - Wind Resource Map



Secretaría
de Energía
(SENER)



Gobierno del
Estado de Oaxaca,
Secretaría de
Desarrollo
Industrial y
Comercial (SEDIC)



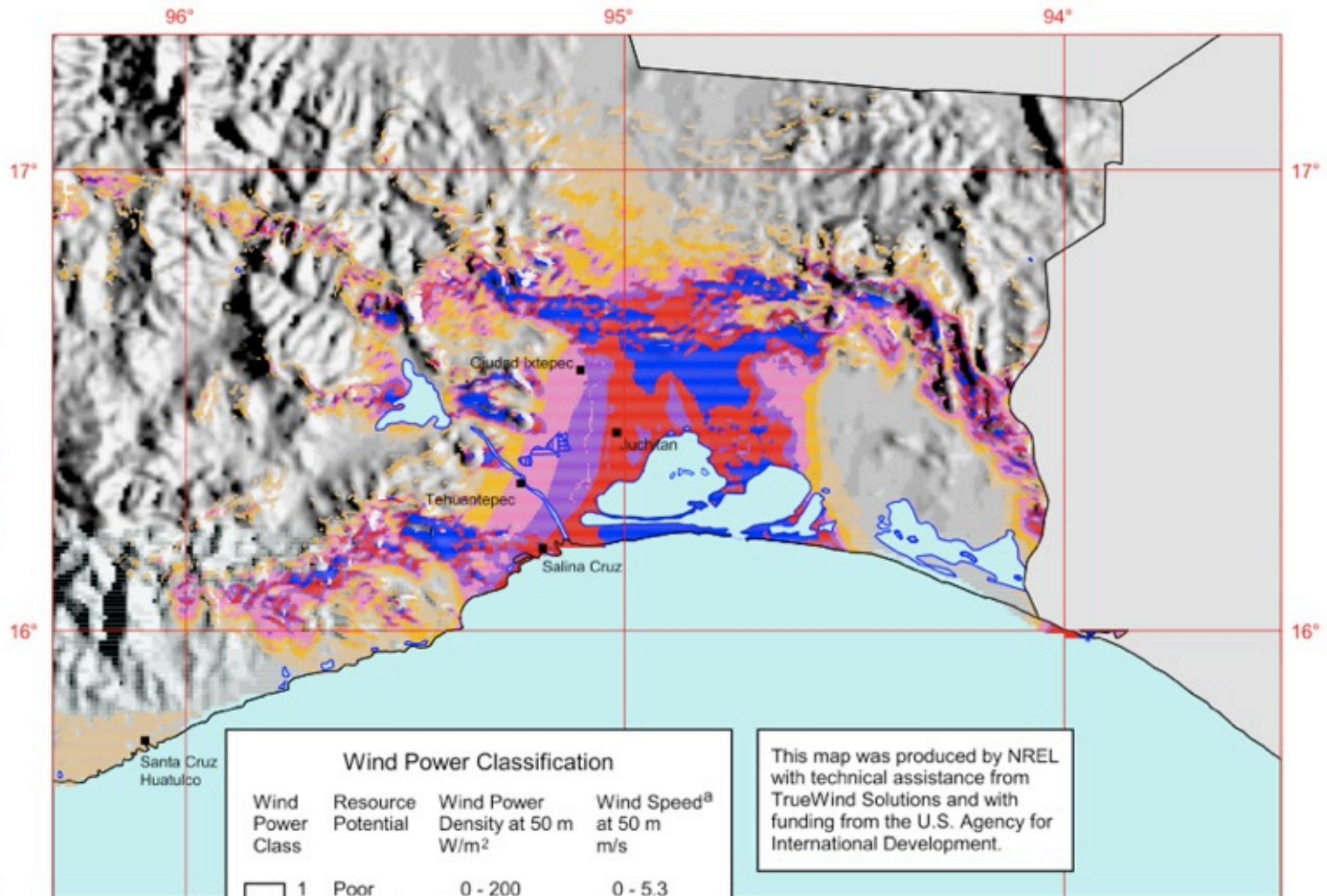
Comisión Federal
de Electricidad



Instituto de
Investigaciones
Eléctricas



Comisión Nacional
del Agua
(CONAGUA)



Wind Power Classification

Wind Power Class	Resource Potential	Wind Power Density at 50 m W/m ²	Wind Speed ^a at 50 m m/s
1	Poor	0 - 200	0 - 5.3
2	Marginal	200 - 300	5.3 - 6.1
3	Moderate	300 - 400	6.1 - 6.7
4	Good	400 - 500	6.7 - 7.3
5	Excellent	500 - 600	7.3 - 7.7
6		600 - 800	7.7 - 8.5
7		> 800	> 8.5

^a Wind speeds are based on a Weibull k value of 1.8

This map was produced by NREL with technical assistance from TrueWind Solutions and with funding from the U.S. Agency for International Development.

20 0 20 40 60 80 Kilometers



U.S. Agency for
International Development



U.S. Department of Energy
National Renewable Energy Laboratory

2003 1.6.13

Legend

■ Town or ■ Capital





Yansa Group: Wind Energy as Community Resource

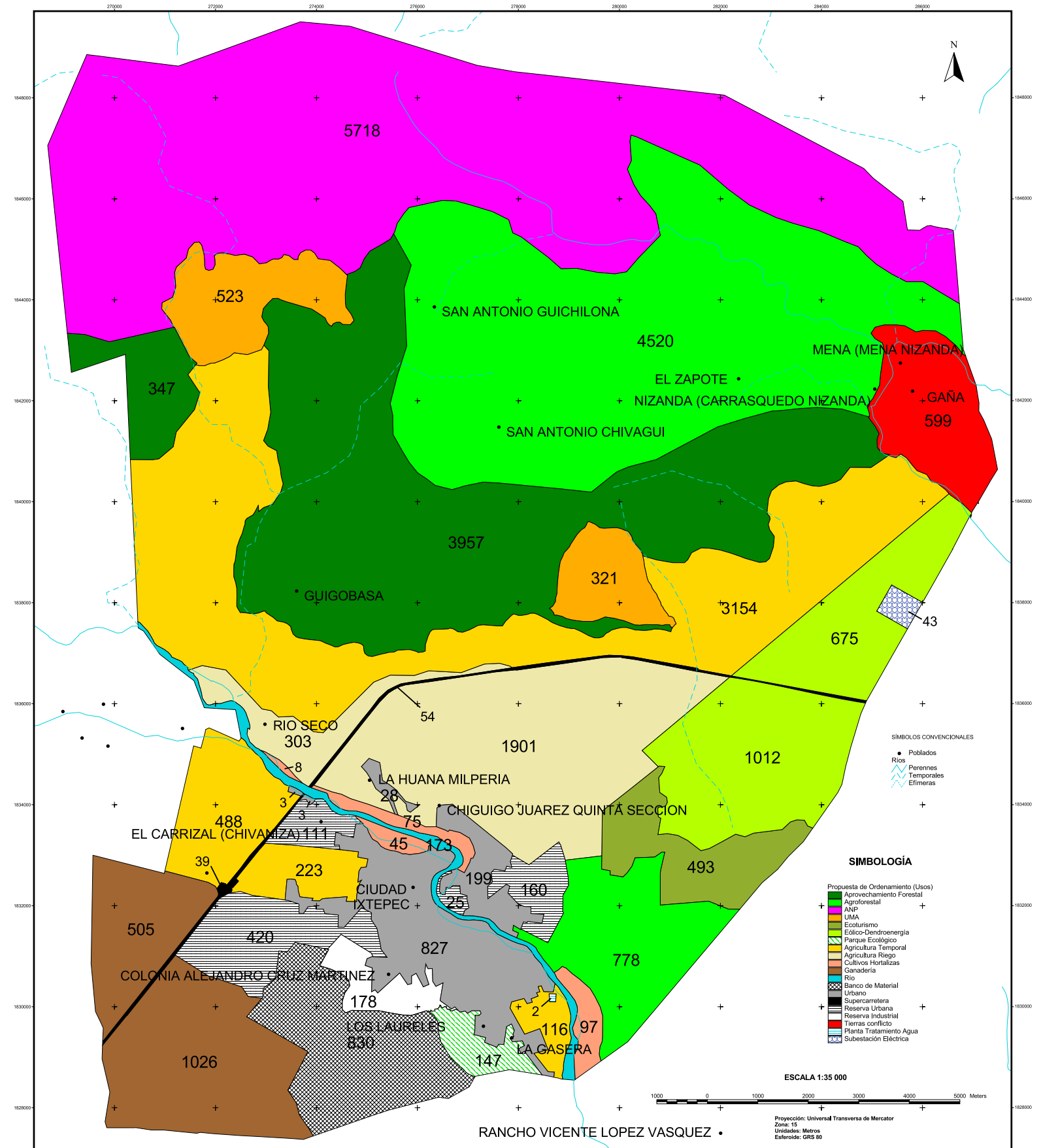
Created in May 2008 to place a part of the green energy sector in the hands of marginalized rural communities.

- Yansa Foundation (501c3): Community-based social development based on wind energy proceeds.
- Yansa Community Interest Company: Technical capacity, wind farm planning & realization.
- Yansa Investment funds created for each one of the projects.

Community Wind Farm in Ixtepec

The community of Ixtepec wants a community wind farm.

They have optimal wind conditions and the substation that connects to the grid all the region's wind farms.



The Yansa Group. A Just Transition to Renewable Energy.



www.yansa.org

sergio.oceransky@yansa.org